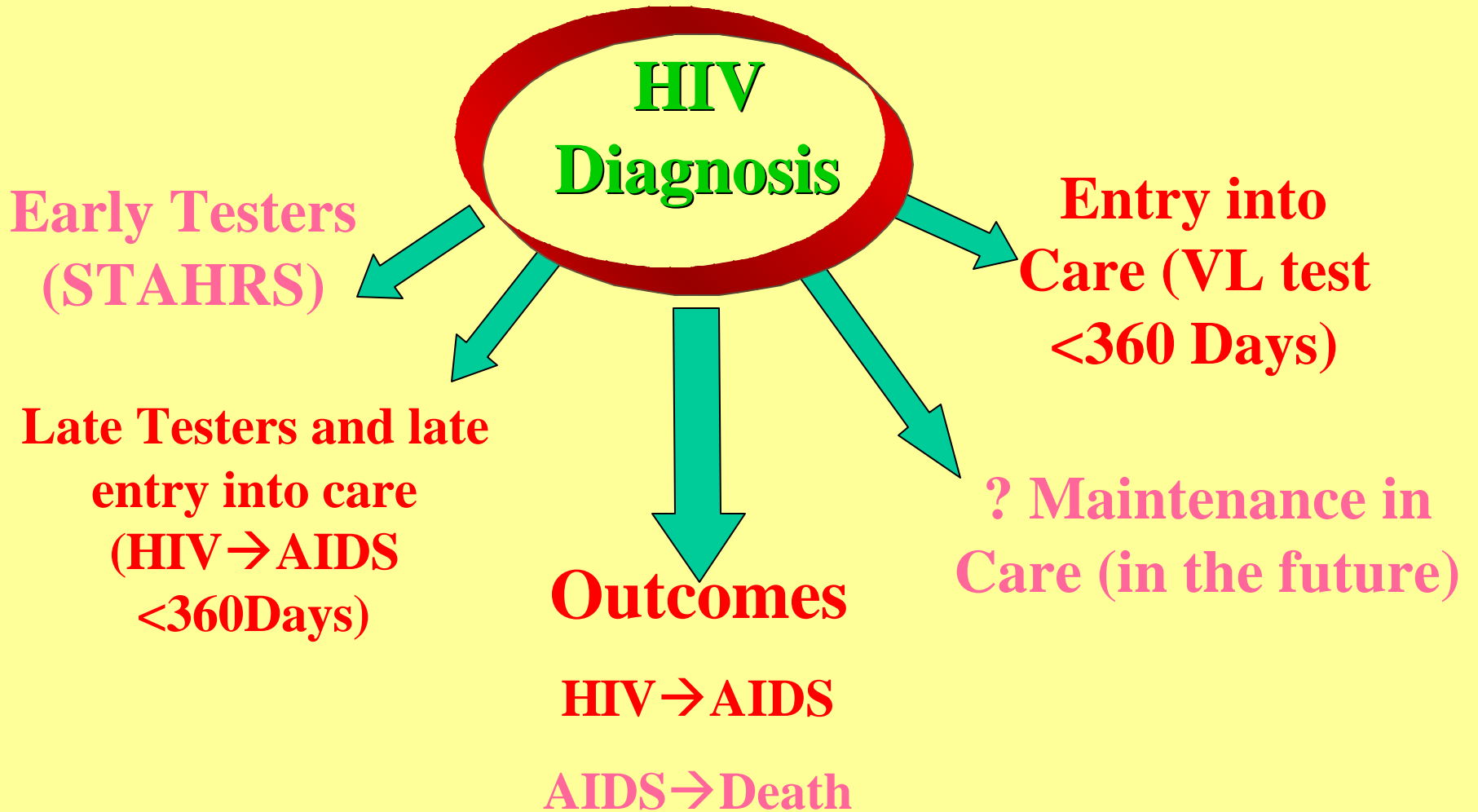


# **What Can HIV Surveillance Data Tell Us Relating to Health Care of PLWHA?**

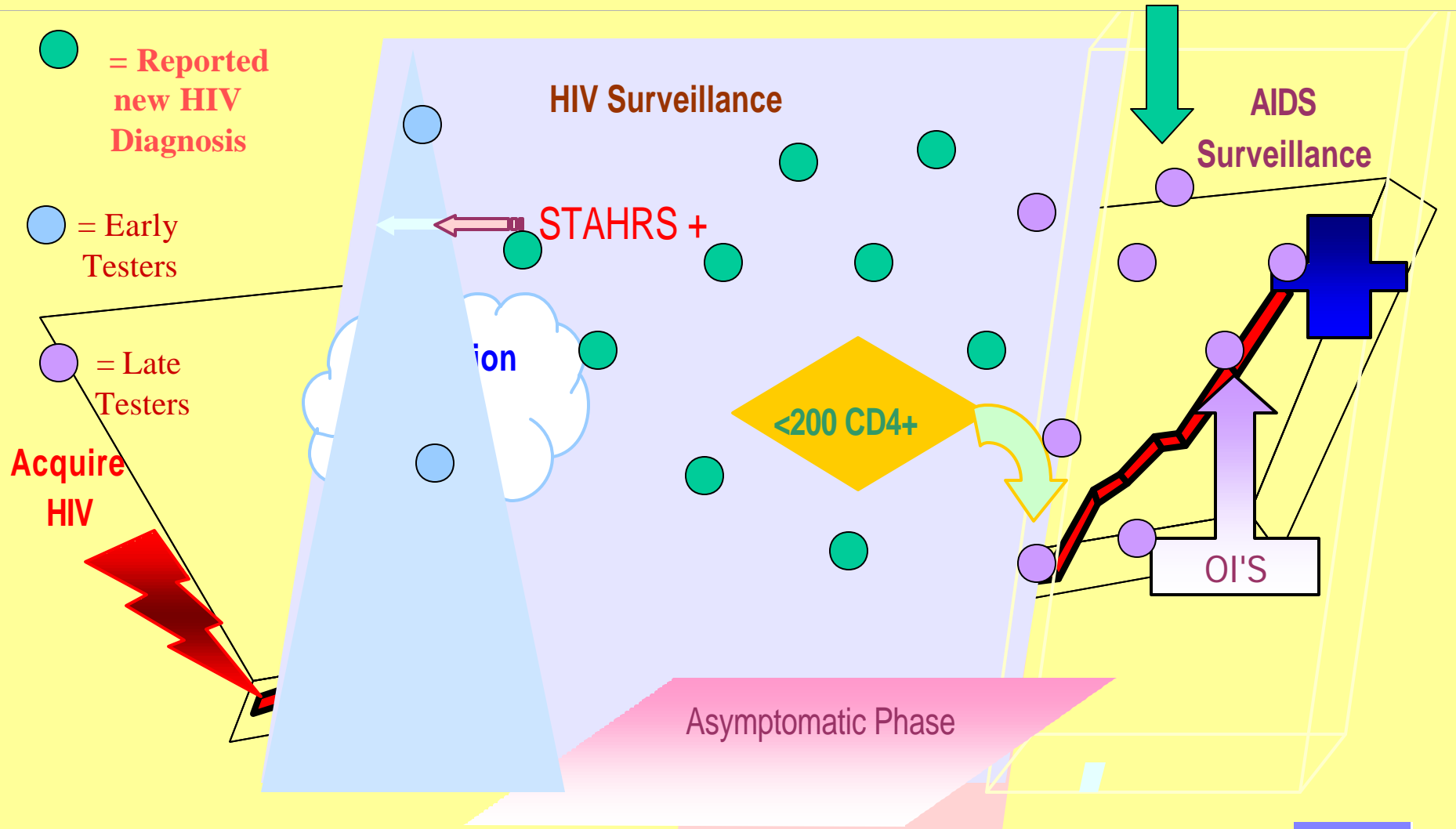
**Susan W. Forlenza, MD, MPH**

*New York City Department of Health  
& Mental Hygiene*

# Getting the Most out of a HIV Surveillance Data

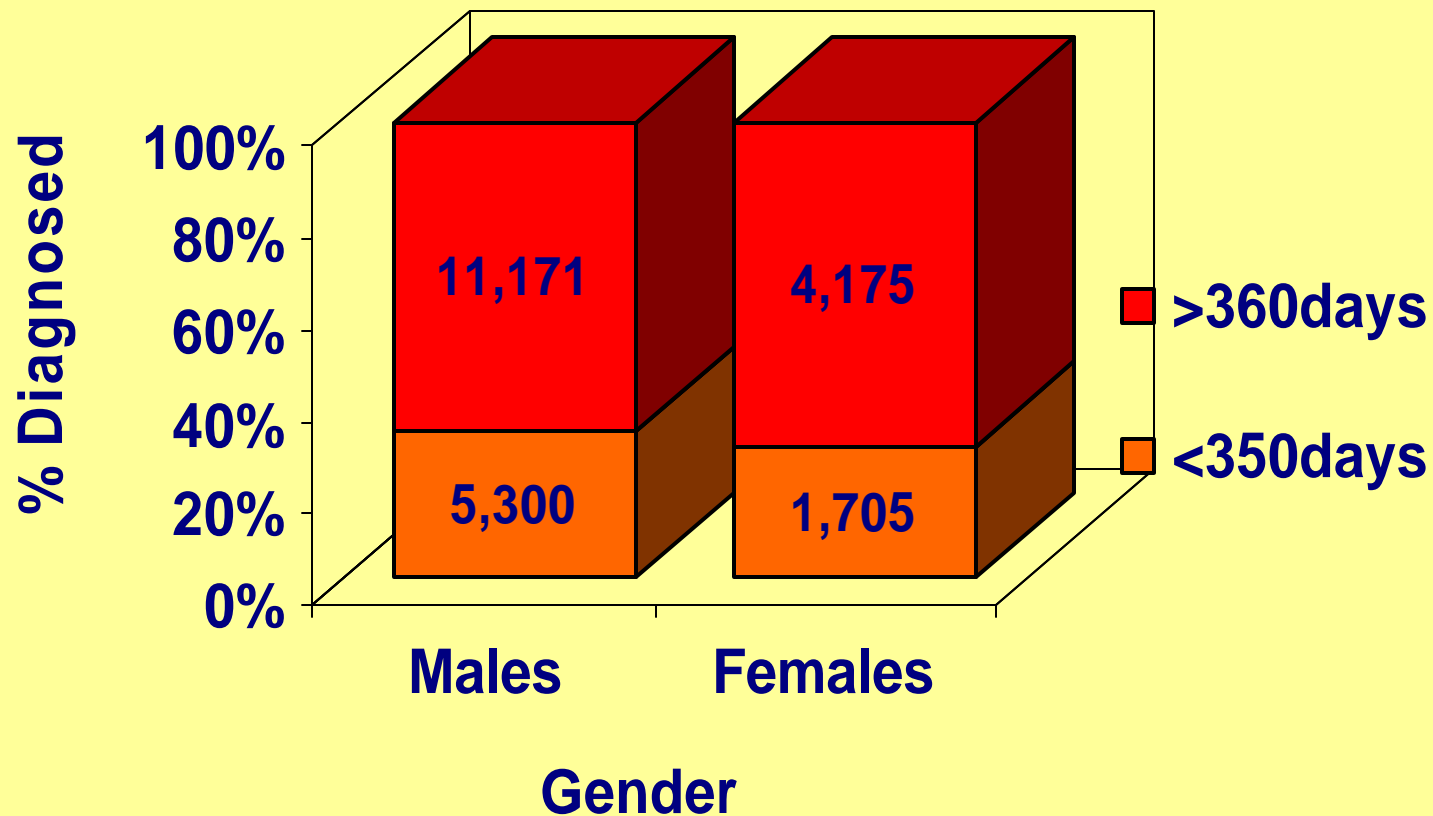


# HIV Infection Timeline

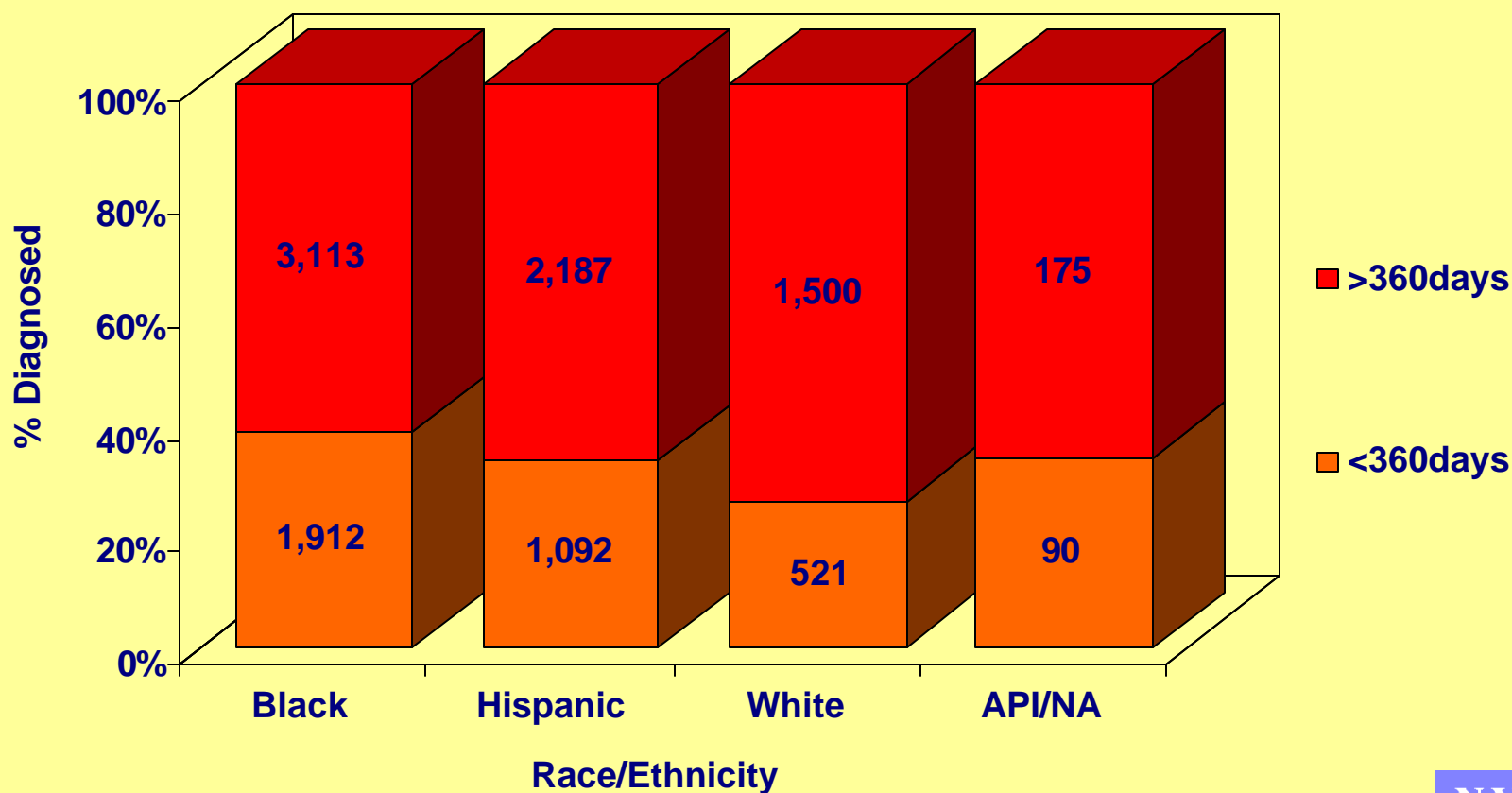


**Persons Diagnosed with AIDS within One  
Year of their HIV Diagnosis**  
***“LATE TESTERS”***

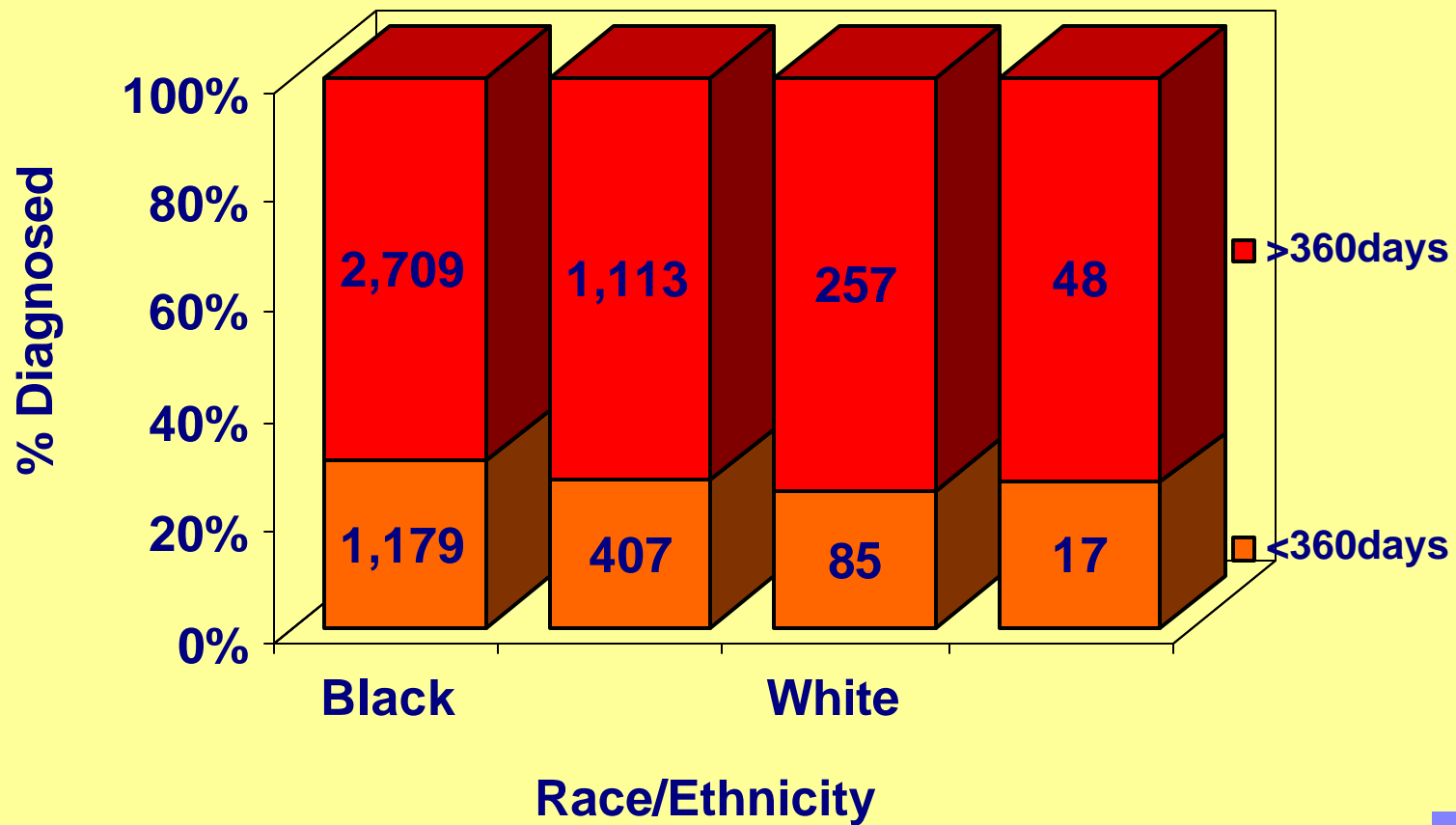
# Persons Diagnosed with HIV 6/2000-9/2003 by Diagnosis Category and Gender



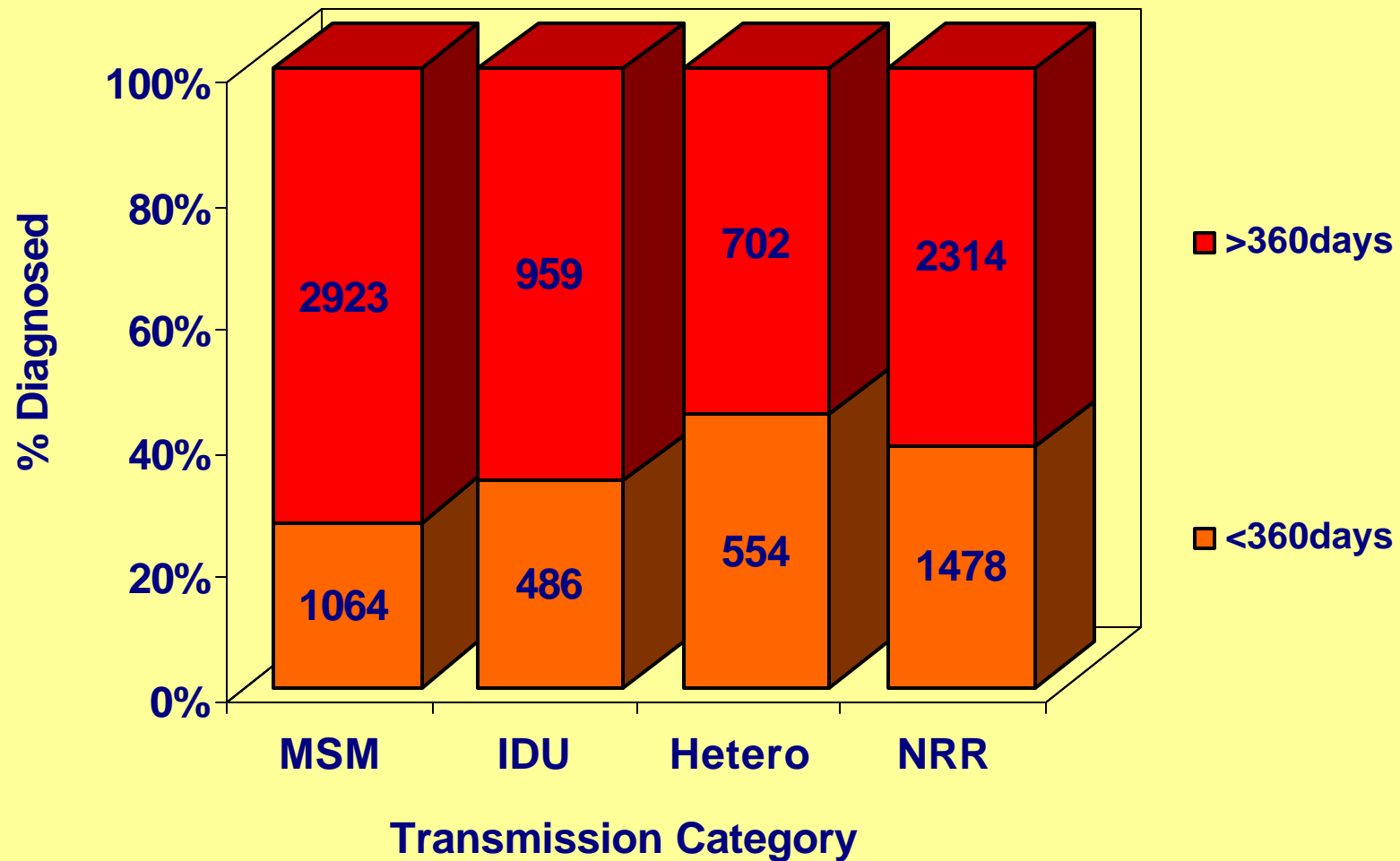
# **MEN** Diagnosed with HIV 6/2000- 9/2003 by Diagnosis Category and Race/Ethnicity



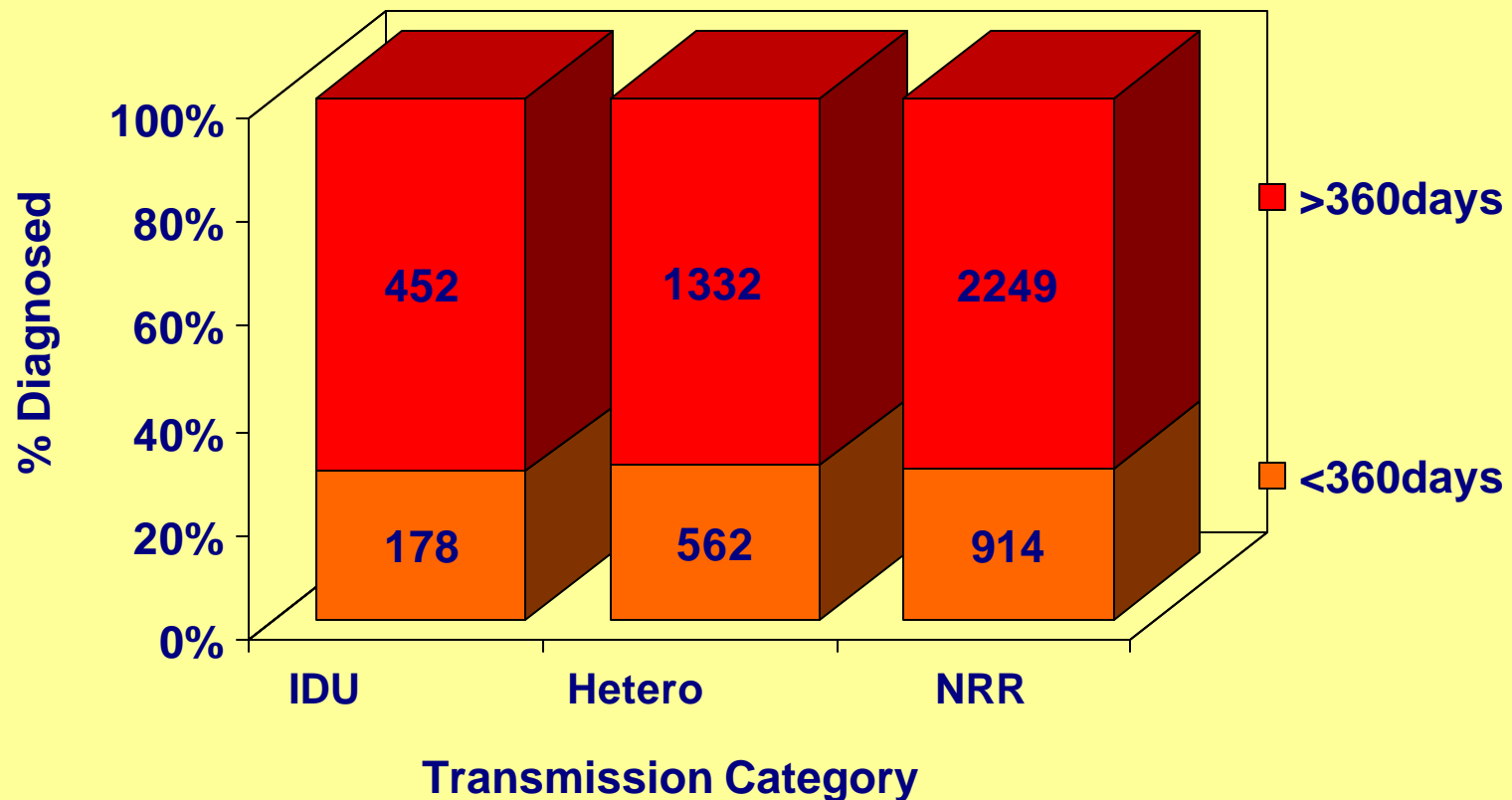
# New HIV Diagnoses 6/2000- 9/2003 in **WOMEN** by Race/Ethnicity & Diagnosis Category



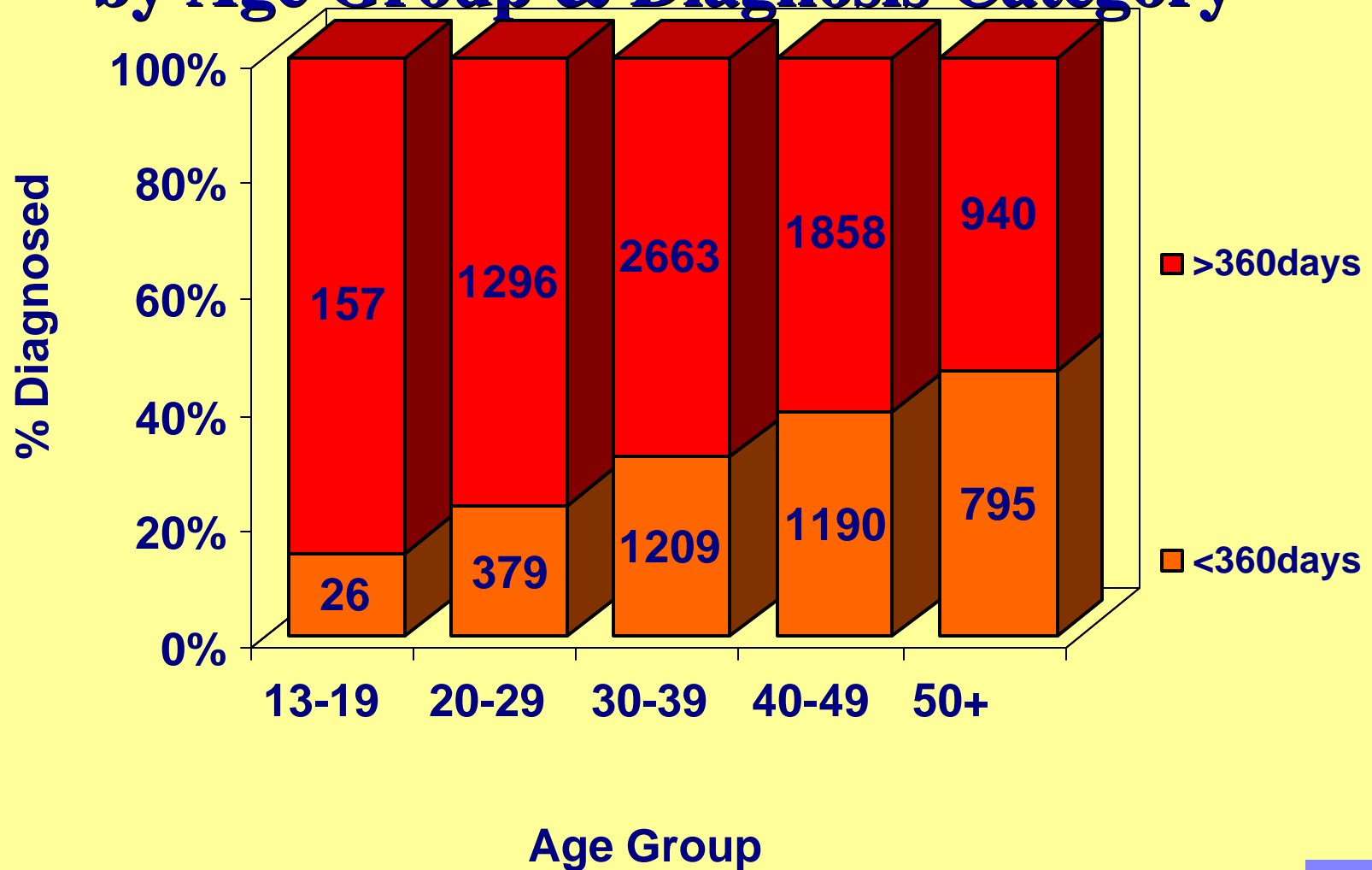
# New HIV Diagnoses 6/2000- 9/2003 in **MEN** by Risk & Diagnosis Category



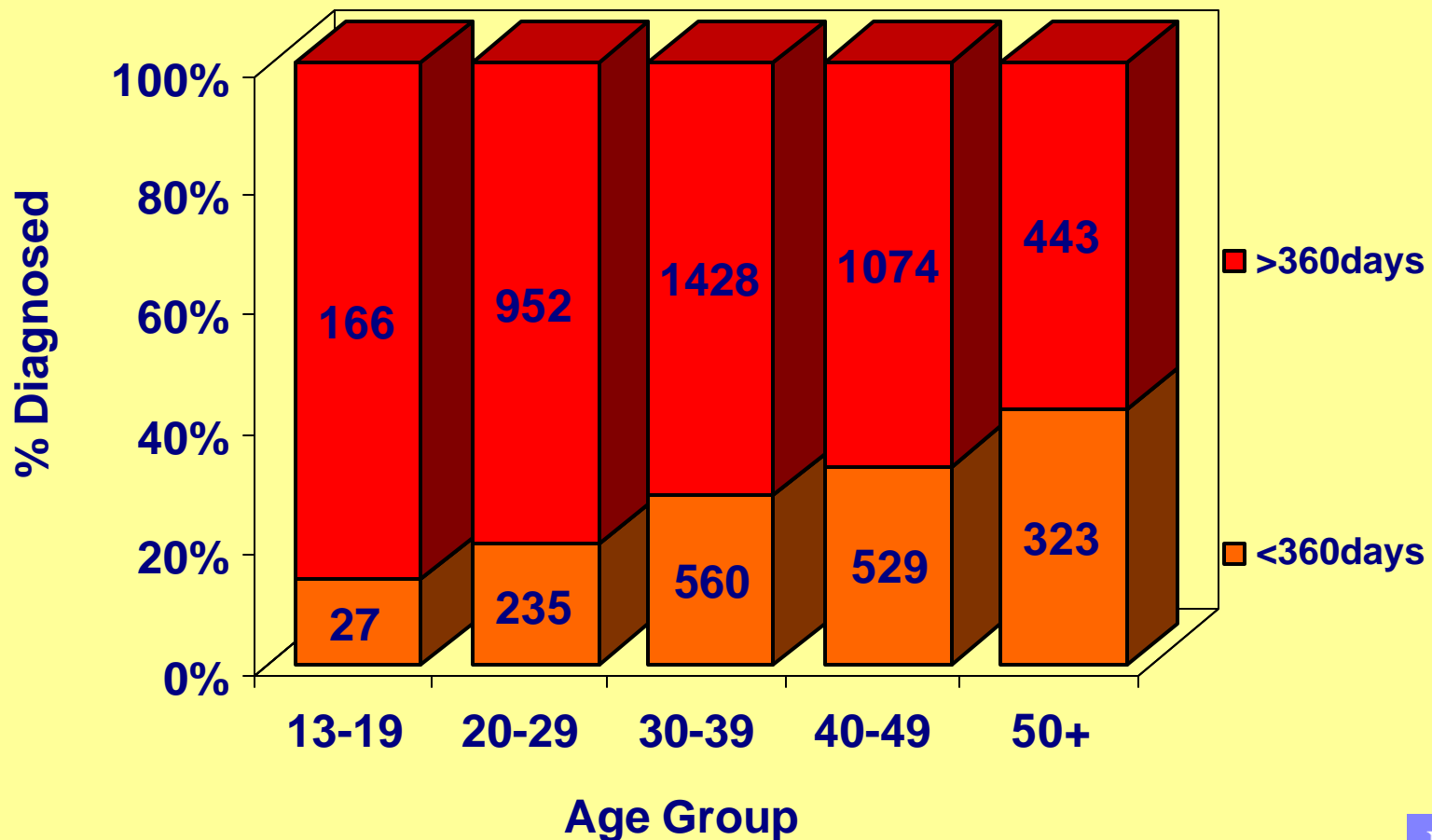
# New HIV Diagnoses 6/2000- 9/2003 in **WOMEN** by Risk & Diagnosis Category



# New HIV Diagnoses 6/2000- 9/2003 in **MEN** by Age Group & Diagnosis Category



# New HIV Diagnoses through 9/2003 in **WOMEN** by Age Group & Diagnosis Category

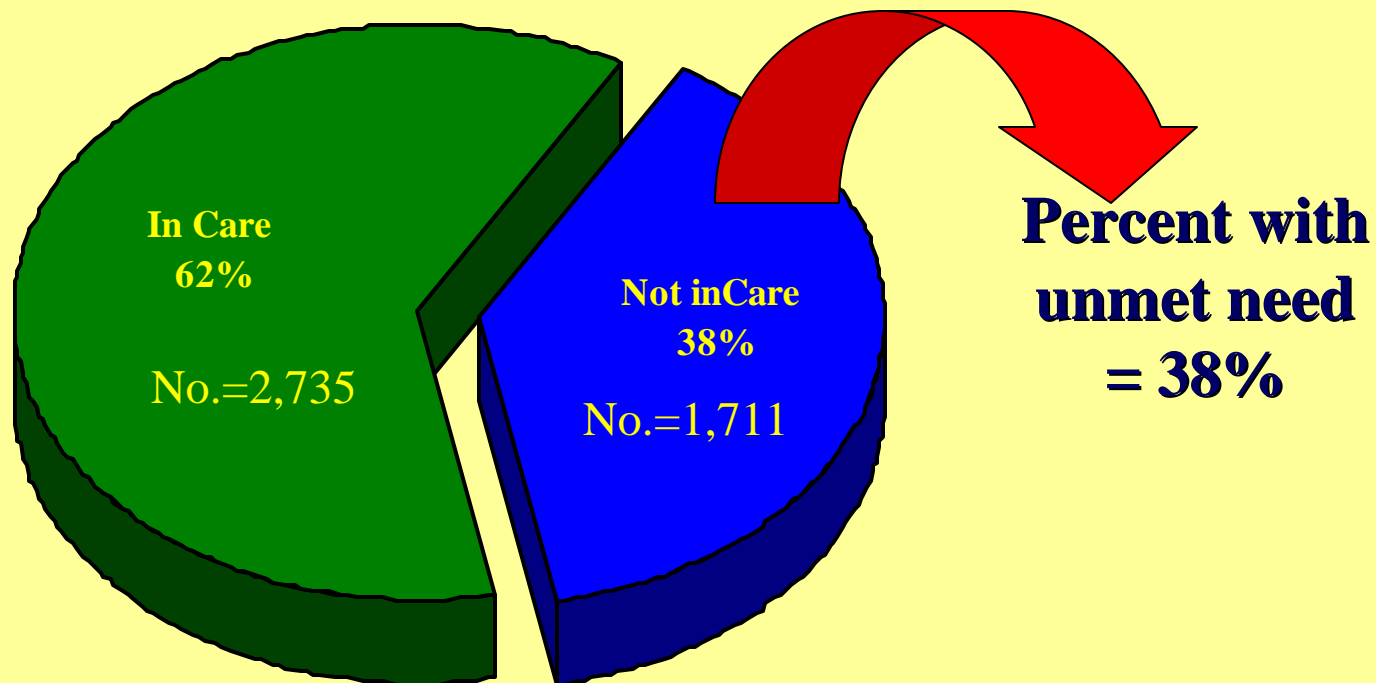


# Entry into Care

Evidence of having had a VL or CD4+ laboratory test within 12 months of a new HIV diagnosis.

**Unmet Need: (*Lack of Evidence of Entry into Care*) in All Persons Diagnosed with HIV, non-AIDS : 1/12002 – 12/31/2002**

**No. = 4,446**



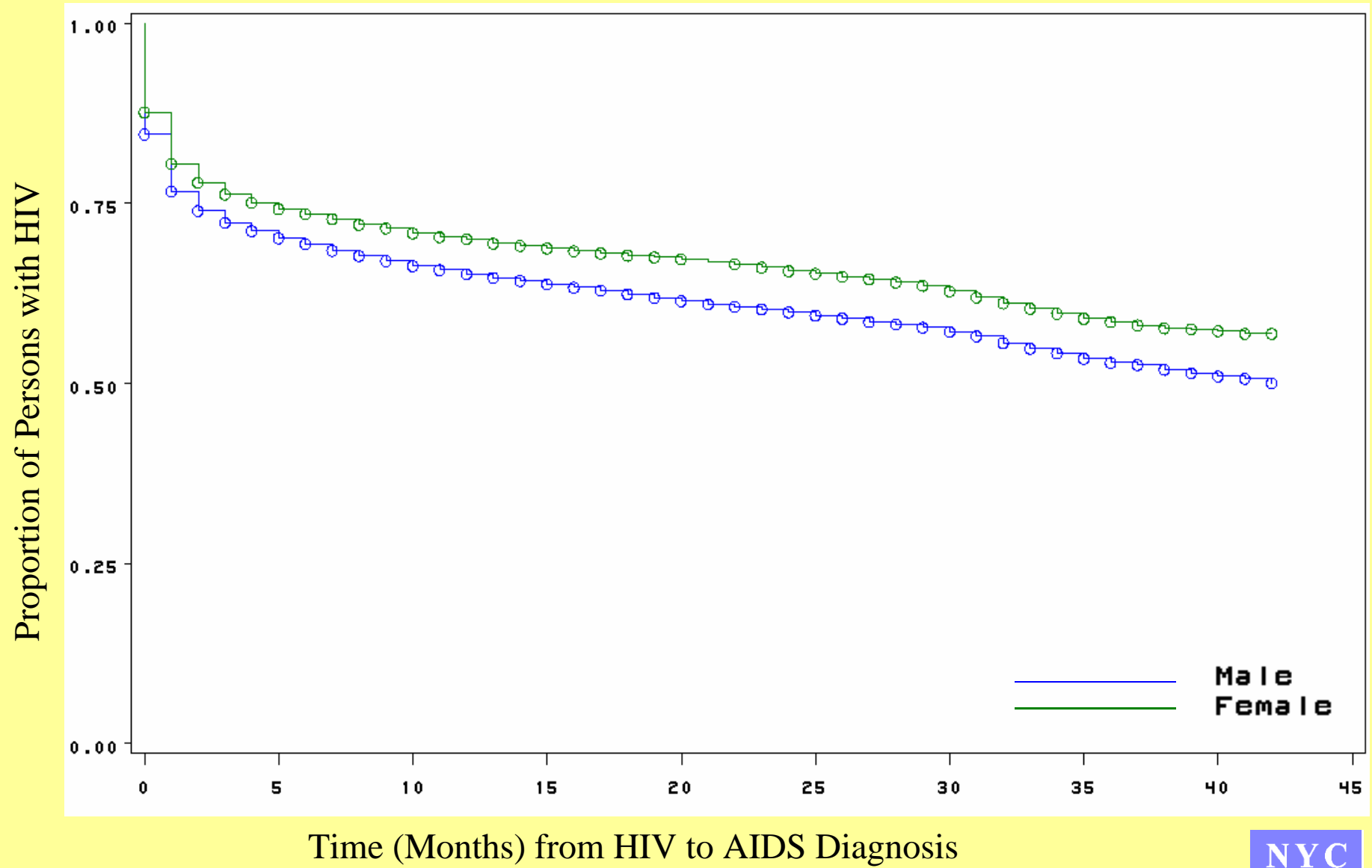
# Outcomes

HIV → AIDS

## Using Kaplan-Meier Plots to Assess Progression from an HIV Diagnosis to AIDS

- K-M Analysis allows us to track the progression of persons from the time of their HIV diagnosis (Time 0) until they are diagnosed with AIDS.
- Many factors can influence this progression:
  - When in the stage of their HIV infection the person was diagnosed,
  - Co-morbidities such as hepatitis B, tuberculosis, etc.,
  - Whether or not the individual is enrolled in care and,
  - Whether or not the person receives antiretroviral medications.
- Overall Differences between populations can be compared.

# Kaplan Meier Curves for Persons Diagnosed with HIV to AIDS Progression, by Sex, 6/1/2000-12/31/2003\*

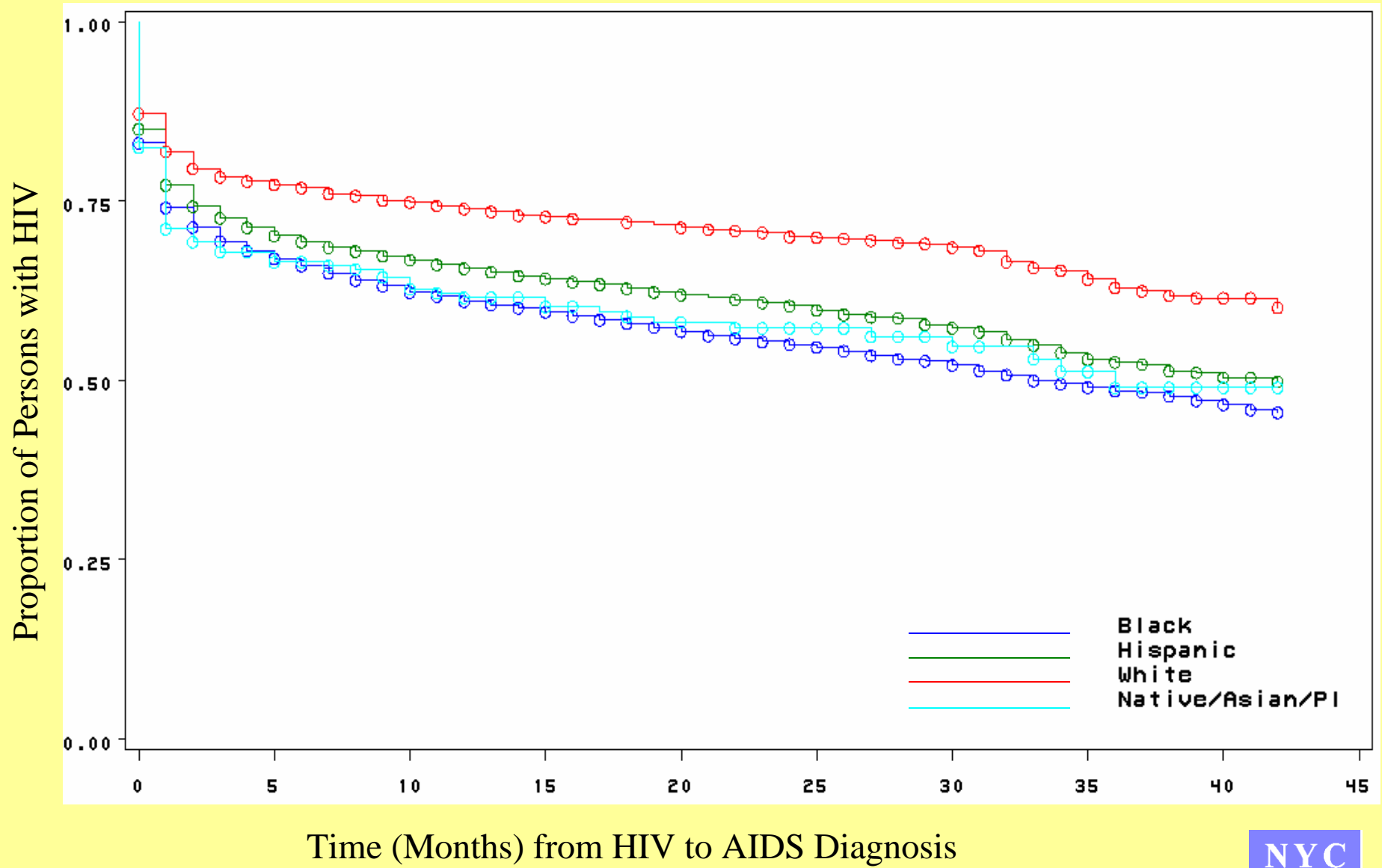


New York City Department of Health & Mental Hygiene

\*For events occurring through December 2003 and reported by September 30, 2004



# Kaplan Meier Curves for Males Diagnosed with HIV to AIDS Progression, by Race, 6/1/2000-12/31/2003\*

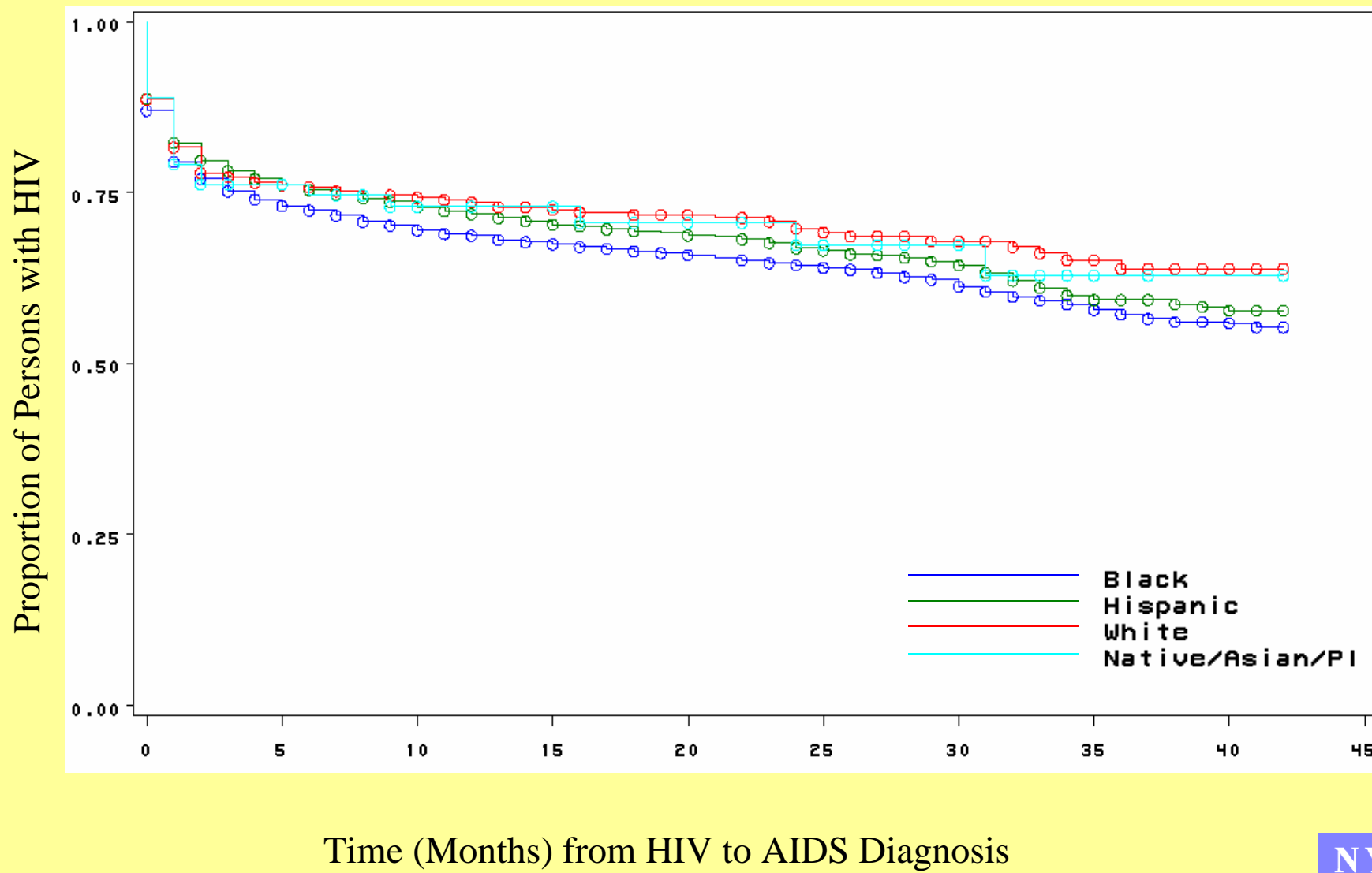


New York City Department of Health & Mental Hygiene

\*For events occurring through December 2003 and reported by September 30, 2004



# Kaplan Meier Curves for Females Diagnosed with HIV to AIDS Progression, by Race, 6/1/2000-12/31/2003\*

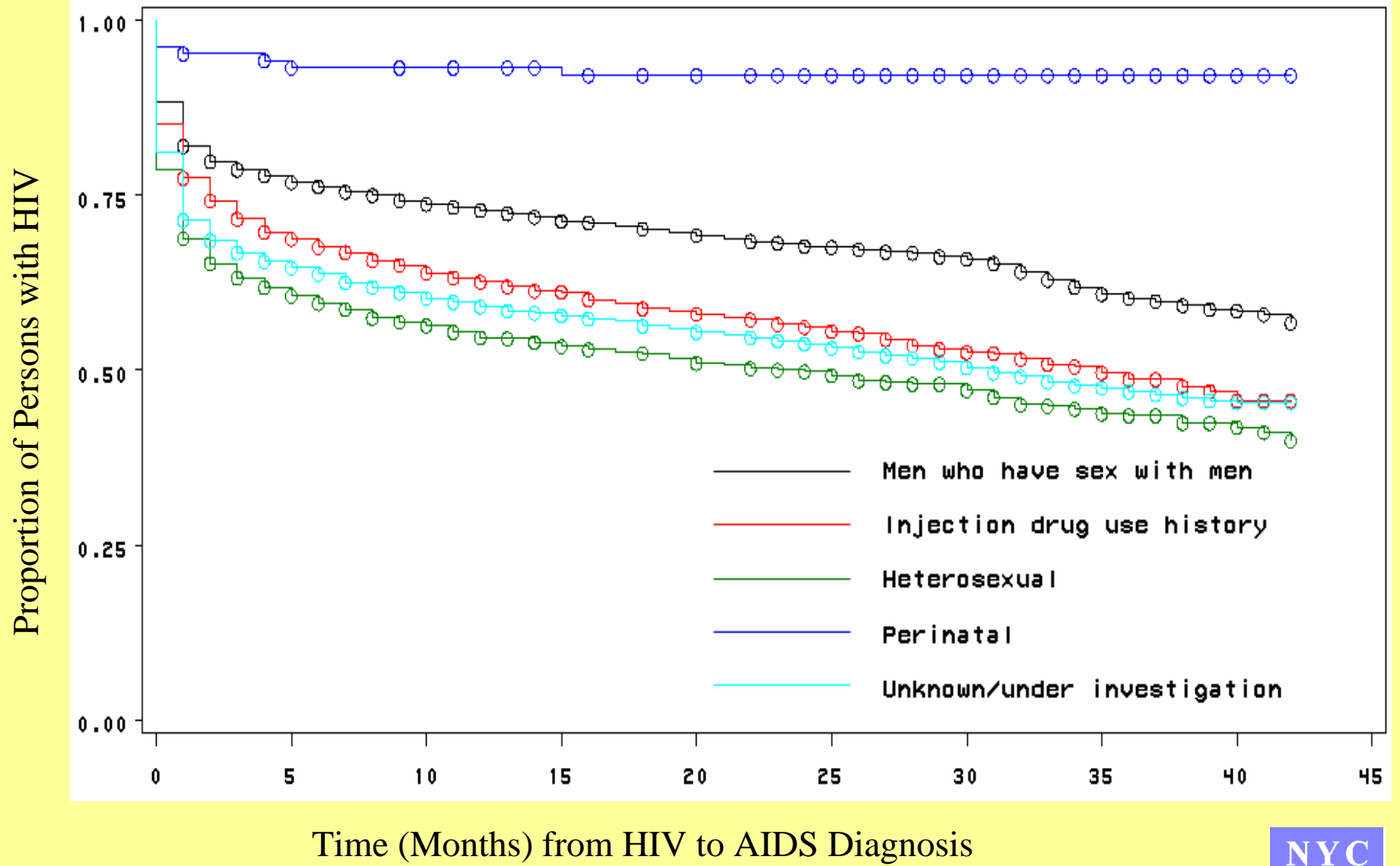


New York City Department of Health & Mental Hygiene

\*For events occurring through December 2003 and reported by September 30, 2004



# Kaplan Meier Curves for Males Diagnosed with HIV to AIDS Progression, by Transmission Risk, 6/1/2000-12/31/2003\*

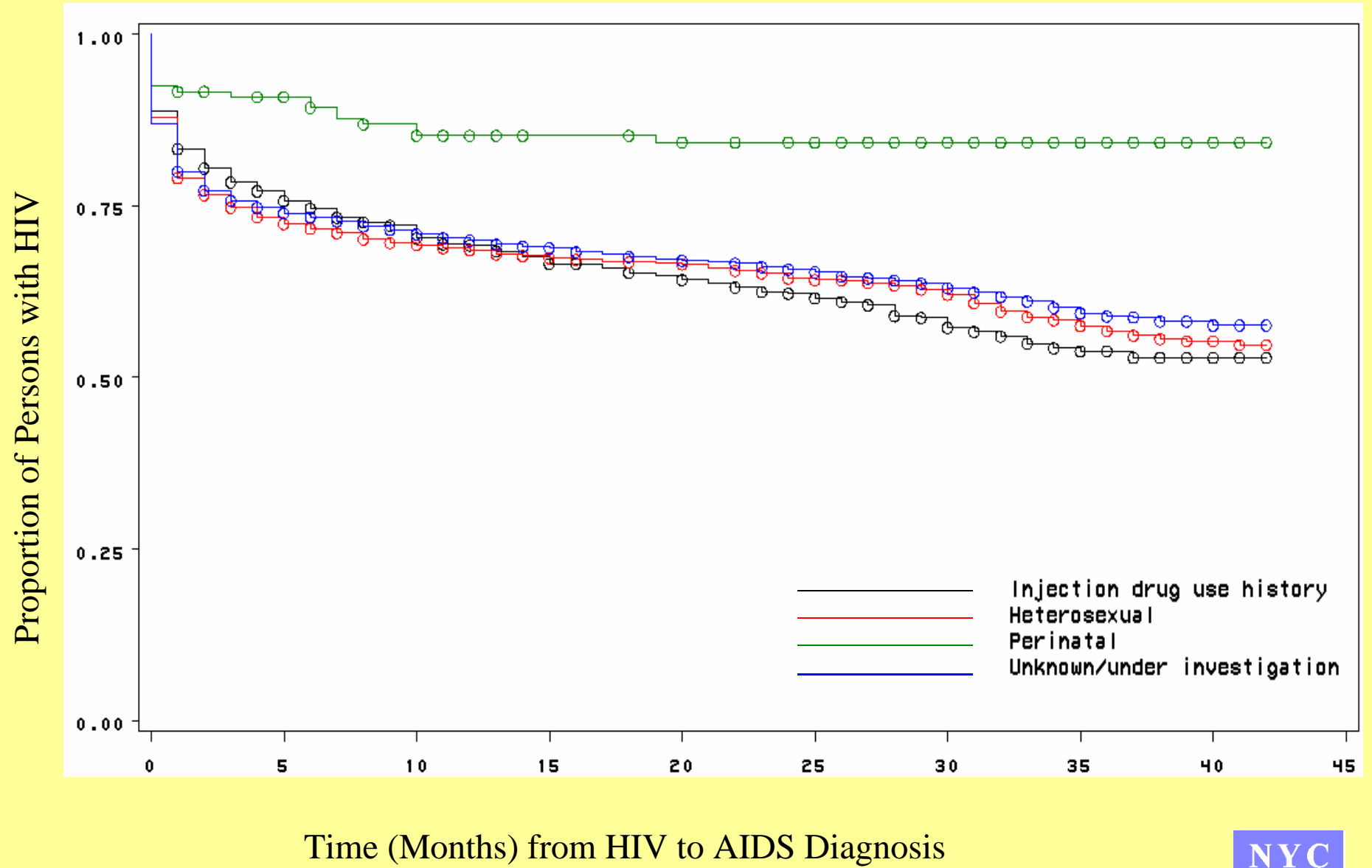


New York City Department of Health & Mental Hygiene

\*For events occurring through December 2003 and reported by September 30, 2004



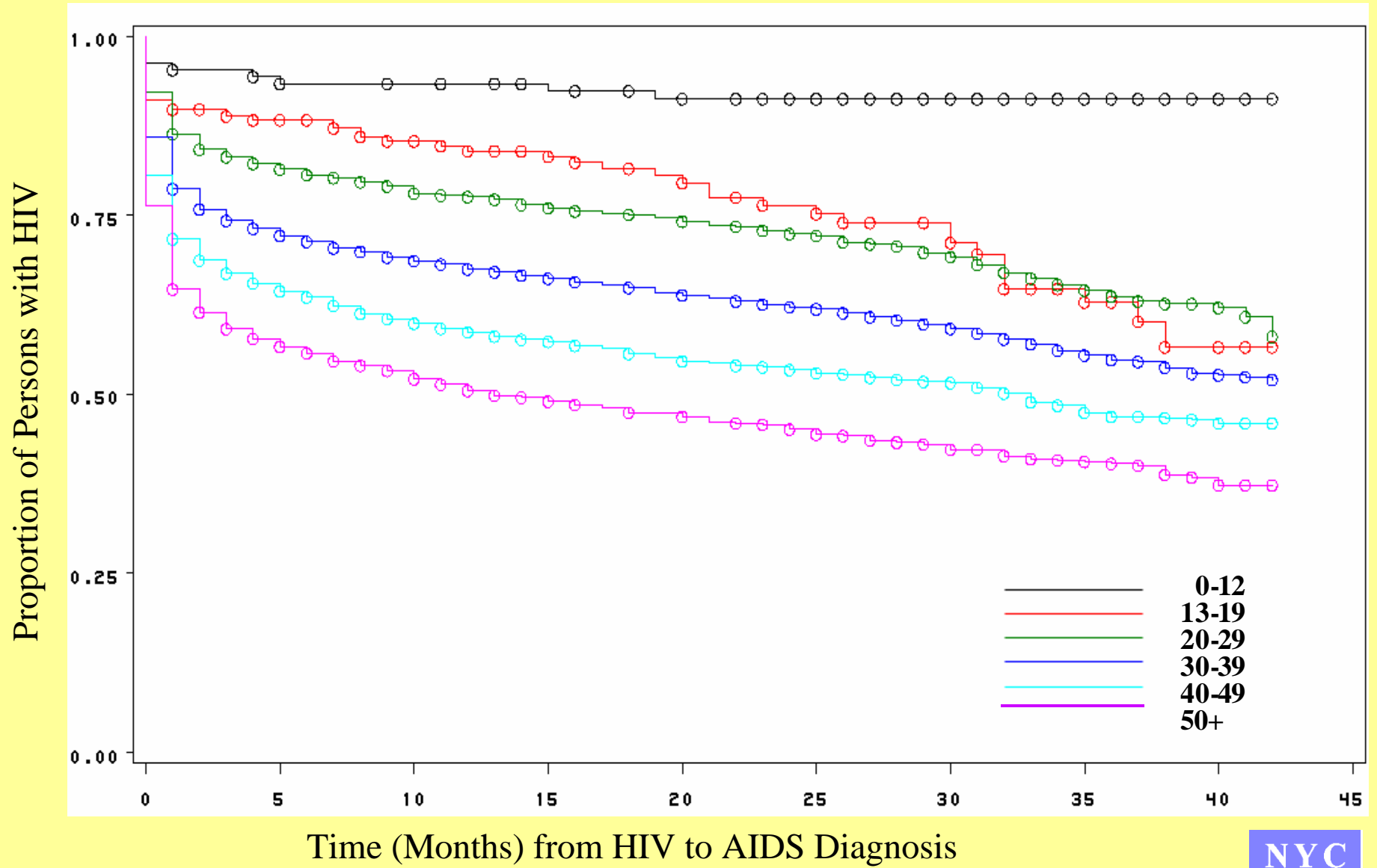
# Kaplan Meier Curves for Females Diagnosed with HIV to AIDS Progression, by Transmission Risk, 6/1/2000-12/31/2003\*



New York City Department of Health & Mental Hygiene  
 \*For events occurring through December 2003 and reported by September 30, 2004



# Kaplan Meier Curves for Males Diagnosed with HIV to AIDS Progression, by Age group (years), 6/1/2000-12/31/2003\*

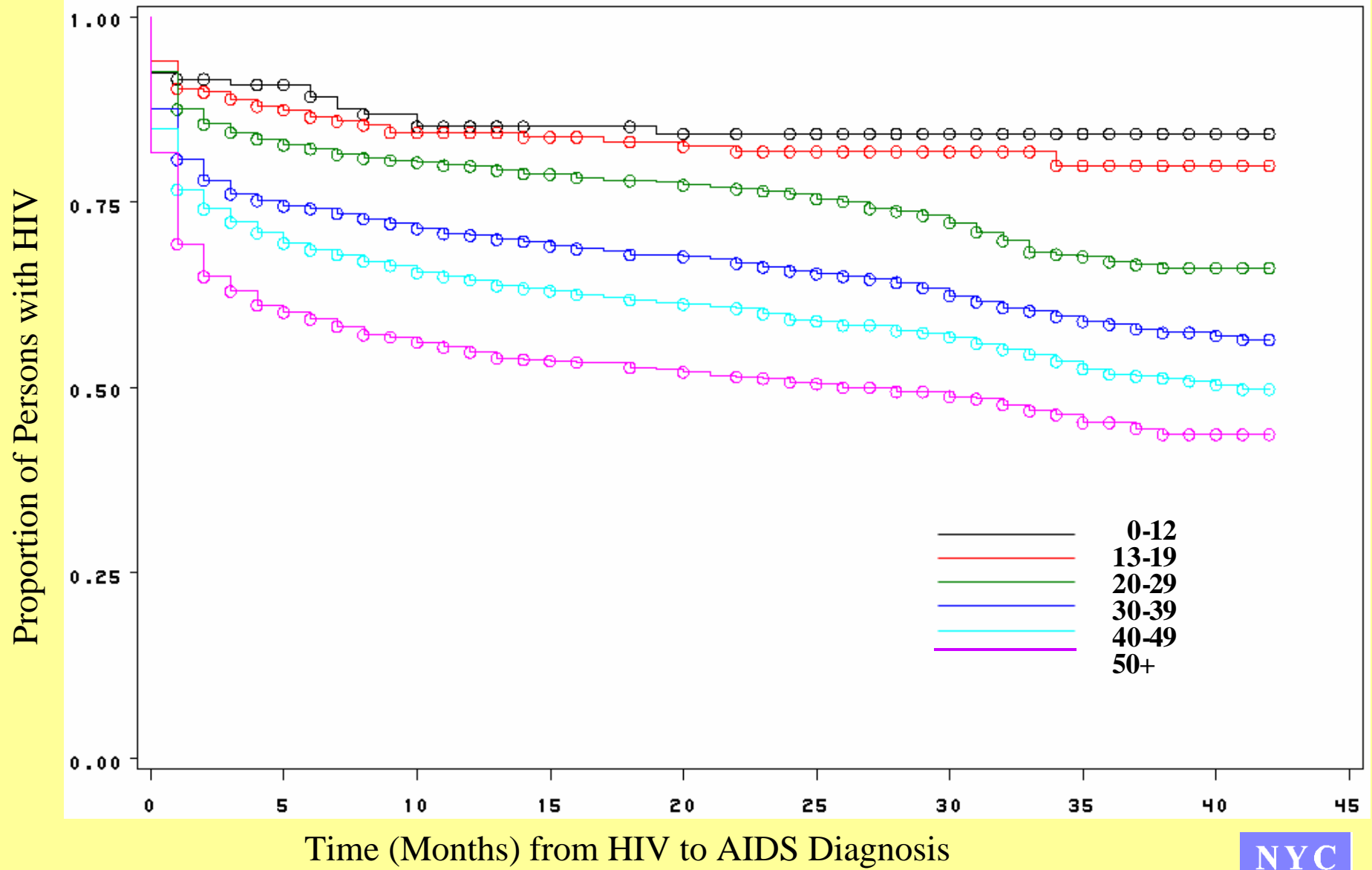


New York City Department of Health & Mental Hygiene

\*For events occurring through December 2003 and reported by September 30, 2004



# Kaplan Meier Curves for Females Diagnosed with HIV to AIDS Progression, by Age group (years), 6/1/2000-12/31/2003\*

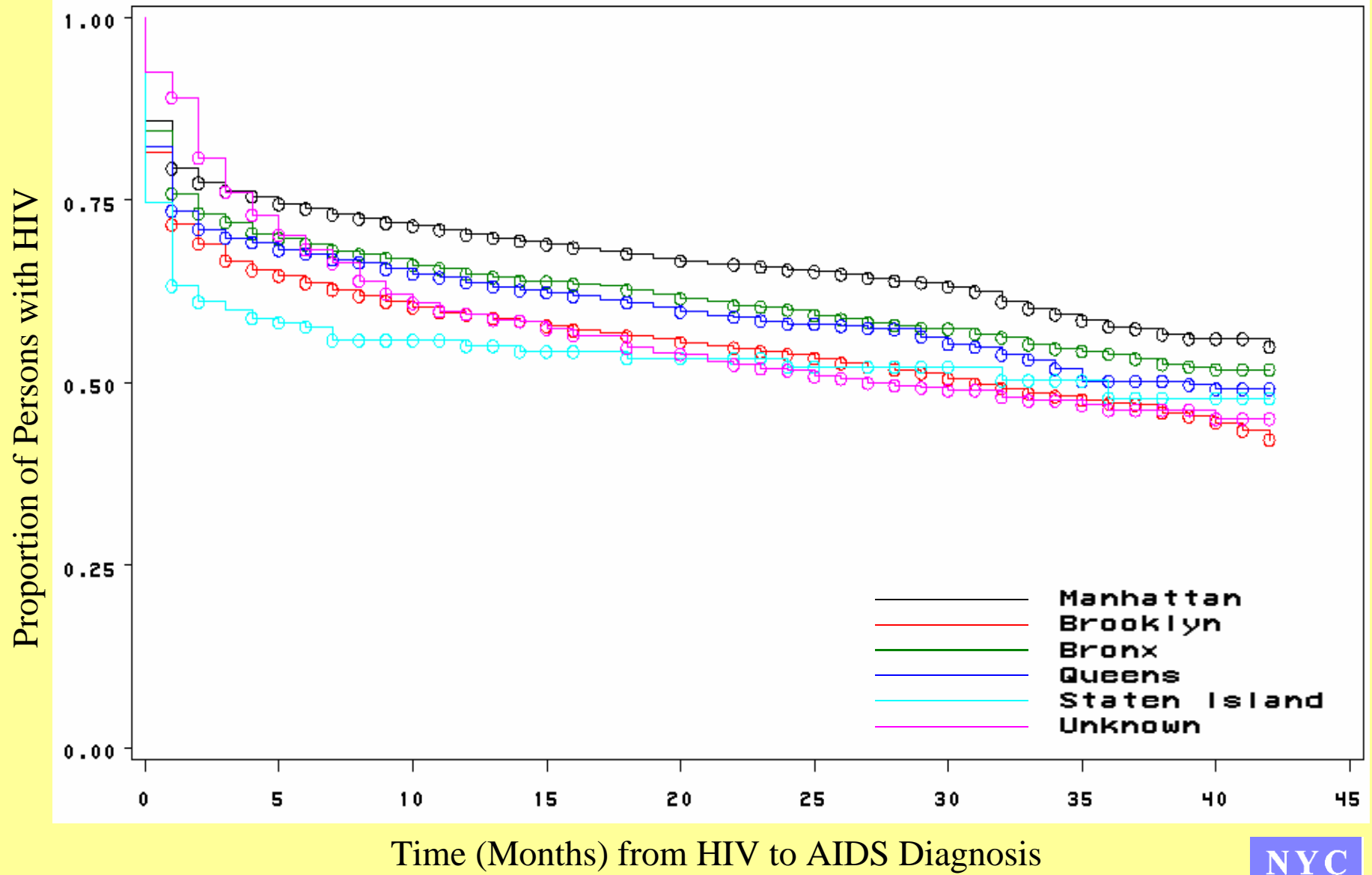


New York City Department of Health & Mental Hygiene

\*For events occurring through December 2003 and reported by September 30, 2004



# Kaplan Meier Curves for Males Diagnosed with HIV to AIDS Progression, by Borough, 6/1/2000-12/31/2003\*

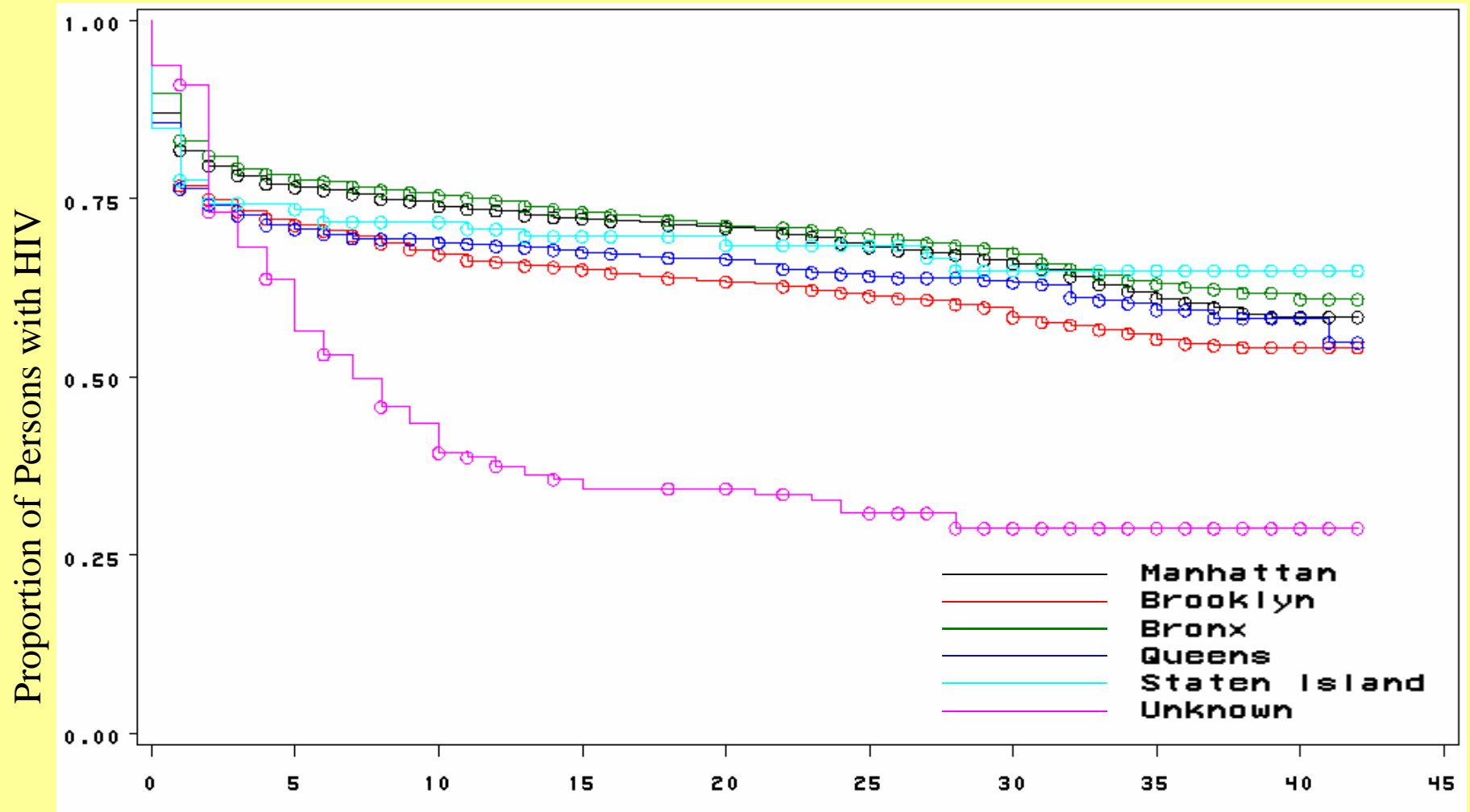


New York City Department of Health & Mental Hygiene

\*For events occurring through December 2003 and reported by September 30, 2004



# Kaplan Meier Curves for Females Diagnosed with HIV to AIDS Progression, by Borough, 6/1/2000-12/31/2003\*



Time (Months) from HIV to AIDS Diagnosis

New York City Department of Health & Mental Hygiene

\*For events occurring through December 2003 and reported by September 30, 2004



# Summary - 1

- There was essentially no difference in the proportion of men and women who were late testers.
- A higher proportion of black men and a smaller proportion of white men had an AIDS diagnosis within 1 year of their HIV diagnosis.

## Summary - 2

- Among men, the smallest proportion who were late testers were MSM, and the largest proportion had heterosexual risk.
- There was an direct relationship between increasing age and the proportion of men and women diagnosed with AIDS within one year of their HIV diagnosis.

# Summary - 3

- Among men, white men and MSM had a slower progression from HIV to AIDS than men in other categories.
- For both men and women, the older the age, the more rapid the progression from an HIV to AIDS diagnosis.
- HIV surveillance data can be used to assess many factors relating to access to care and progression of disease.