

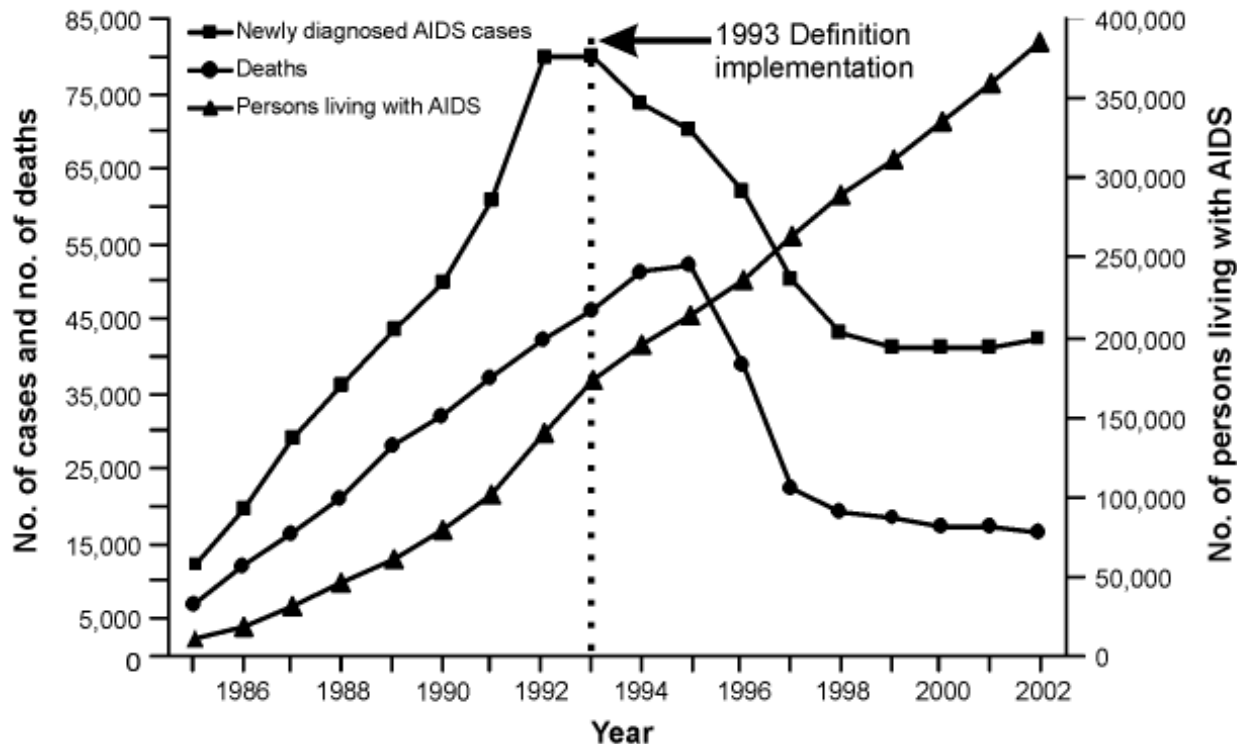
HIV/AIDS

Surveillance Report

Cases of HIV infection and AIDS in the United States, 2002

Vol. 14

AIDS Cases, Deaths, and Persons Living with AIDS by Year, 1985–2002—United States



Adjusted for reporting delays.



DEPARTMENT OF HEALTH AND HUMAN SERVICES
Public Health Service
Centers for Disease Control and Prevention
Atlanta, Georgia 30333



The *HIV/AIDS Surveillance Report* is published annually by the Division of HIV/AIDS Prevention–Surveillance and Epidemiology, National Center for HIV, STD, and TB Prevention, Centers for Disease Control and Prevention, Atlanta, Georgia.

All data are provisional.

The *HIV/AIDS Surveillance Report* is not copyrighted and may be used and copied without permission. Citation of the source is, however, appreciated.

Suggested citation

Centers for Disease Control and Prevention. *HIV/AIDS Surveillance Report* 2002;14:[inclusive page numbers].

Also available at: <http://www.cdc.gov/hiv/stats/hasrlink.htm>.

Centers for Disease Control and Prevention Julie Louise Gerberding, M.D., M.P.H.
Director

National Center for HIV, STD, and TB Prevention Harold W. Jaffee, M.D.
Director

Division of HIV/AIDS Prevention—Surveillance and Epidemiology Robert S. Janssen, M.D.
Director

HIV Incidence and Case Surveillance Branch Matthew T. McKenna, M.D., M.P.H.
Chief

Research and Dissemination Team Hazel D. Dean, Sc.D., M.P.H.
Team Leader

Statistics and Data Management Branch Xen Santas
Acting Chief

The HIV/AIDS design element on the cover is used with the permission of the American Red Cross.

Single copies: CDC National Prevention Information Network, P.O. Box 6003, Rockville, MD 20849-6003, Telephone: 1-800-458-5231 or 1-301-562-1098

Request to be added to mailing list: CDC, MASO/MSB, Mail Stop F-07, 4770 Buford Highway, Chamblee, GA 30341-3717

On the Web: <http://www.cdc.gov>, Select Publications, Software & Products.

Confidential information, referrals, and educational material on HIV infection and AIDS:

CDC National AIDS Hotline, 1-800-342-2437, 1-800-344-7432 (Spanish), 1-800-243-7889 (TTY, deaf access)

Acknowledgments:

Publication of this report would not have been possible without the contributions of the State and Territorial Health Departments and the HIV/AIDS Surveillance Programs which provided surveillance data to the Centers for Disease Control and Prevention.

This report was prepared by the following staff and contractors of the Division of HIV/AIDS Prevention, National Center for HIV, STD, and TB Prevention, Centers for Disease Control and Prevention: Janet Brzuskiwicz, Linda Carr, Sam Costa, Hazel D. Dean, Robert Frey, Xiaohong Hu, Denise Hughes, Marta Juhasz, Monina Klevens, Lisa Lee, Renee Maciejewski, Katrina McGee, Marie Morgan, Allyn Nakashima, Joyce Neal, Karen Resha, Xen Santas, Anna Satcher, Richard Selik, Brooke Steele, and Shari Steinberg.

Federal Recycling Program



Printed on recycled paper

Contents

Commentary	5
-------------------------	----------

Diagnoses of HIV/AIDS and AIDS

Table 1.	Estimated numbers of diagnoses of HIV/AIDS, by year of diagnosis and selected characteristics of persons, 1999–2002—30 areas with confidential name-based HIV infection reporting	10
Table 2.	Estimated distribution of persons with and persons without a diagnosis of AIDS within 12 months of diagnosis of HIV infection, by selected characteristics, 2001—30 areas with confidential name-based HIV infection reporting	11
Table 3.	Estimated numbers of diagnoses of AIDS, by year of diagnosis and selected characteristics of persons, 1998–2002—United States	12
Table 4.	Estimated numbers of diagnoses of AIDS in children <13 years of age, by year of diagnosis and exposure category, 1998–2002—United States	13
Figure 1.	Estimated numbers of diagnoses of AIDS in children <13 years of age, by year of diagnosis, 1992–2002—United States	13
Table 5.	Estimated numbers of diagnoses and rates (per 100,000 population) of AIDS, by persons' race/ethnicity, age category, and sex, 2002—United States	14
Table 6.	Estimated numbers of diagnoses of AIDS in adult or adolescent Hispanics, by diagnosis during 2002, exposure category, and place of birth—United States	15

Deaths

Table 7.	Estimated numbers of deaths of persons with AIDS, by year of death and selected characteristics, 1998–2002—United States	16
----------	--	----

Persons Living with HIV/AIDS, AIDS, or HIV infection (not AIDS)

Table 8.	Estimated numbers of persons living with HIV/AIDS, by year and selected characteristics, 1999–2002—30 areas with confidential name-based HIV infection reporting	17
Table 9.	Estimated numbers of persons living with HIV/AIDS at the end of 2002, by race/ethnicity, sex, and exposure category—30 areas with confidential name-based HIV infection reporting	18
Table 10.	Estimated numbers of persons living with AIDS, by year and selected characteristics, 1998–2002—United States	19
Table 11.	Estimated numbers of persons living with AIDS at the end of 2002, by race/ethnicity, sex, and exposure category—United States	20
Table 12.	Estimated numbers of persons living with HIV infection (not AIDS) or with AIDS at the end of 2002, by state or area of residence and age category—United States	21
Map 1.	Estimated rates for adults and adolescents living with HIV infection (not AIDS) or with AIDS (per 100,000 population), 2002—United States	23
Map 2.	Estimated rates for children <13 years of age living with HIV infection (not AIDS) or with AIDS (per 100,000 population), 2002—United States	23

Survival after AIDS diagnosis

Table 13.	Estimated proportion of persons surviving for more than 12, 24, and 36 months after an AIDS diagnosis in 1998, by selected characteristics—United States	24
-----------	--	----

Figure 2.	Estimated proportion of persons surviving, by months after AIDS diagnosis during 1994–2001 and by year of diagnosis—United States	25
Figure 3.	Estimated proportion of persons surviving, by months after AIDS diagnosis during 1994–2001 and by age group—United States	25
Figure 4.	Estimated proportion of persons surviving, by months after AIDS diagnosis during 1994–2001 and by race/ethnicity—United States	26

Reports of Cases of AIDS, HIV infection (not AIDS), and HIV/AIDS

Table 14.	AIDS cases and rates (per 100,000 population), by area of residence and age category, reported through December 2002—United States.....	27
Table 15.	Cases of HIV infection (not AIDS), by persons’ area of residence and age category, reported through December 2002, from areas with confidential name-based HIV infection reporting	29
Table 16.	AIDS cases, by persons’ age category, exposure category, and sex, reported through December 2002—United States.	30
Table 17.	Cases of HIV infection (not AIDS), by persons’ age category, exposure category, and sex, reported through December 2002, from areas with confidential name-based HIV infection reporting	31
Table 18.	Reported cases of HIV/AIDS in infants born to HIV-infected mothers, by year of child’s birth and selected characteristics, 1994–2002—25 states with confidential name-based HIV infection reporting	32

Technical Notes 33

Web addresses for state HIV/AIDS Surveillance Reports 40

Commentary

Since the use of highly active antiretroviral therapy (HAART) became widespread during 1996, trends in AIDS incidence have become less reflective of underlying trends in HIV transmission. AIDS incidence increased throughout the 1980s, declined from the mid-1990s through 2001, and increased 2% in 2002 (compared with 2001). The number of deaths among persons with AIDS continued to decline. During 1998–2002, the estimated number of deaths among persons with AIDS declined 14%. AIDS prevalence (i.e., the number of persons living with AIDS) continued to increase. At the end of 2002, an estimated 384,906 persons in the United States were known to be living with AIDS (see cover).

To better monitor the patterns of HIV diagnosis, most states have implemented HIV surveillance. Many states in which the HIV surveillance system allowed the reporting of previously diagnosed cases received a large number of HIV case reports during the initial implementation period. However, once most of the previously diagnosed cases had been reported, the number of cases reported in later reporting periods decreased, better reflecting newly diagnosed cases. Some of the persons with a newly diagnosed case had been infected recently; others had been infected some time in the past. Therefore, new HIV diagnoses do not necessarily reflect HIV incidence (i.e., new infections). One method for estimating HIV incidence is to apply the serologic testing algorithm for recent HIV seroconversion (STARHS) to the serum specimens from which recent HIV diagnoses were made. Five areas were funded in FY 2002 to pilot this method, and 19 additional areas were funded in FY 2003. The monitoring of HIV incidence will be critical in evaluating progress toward CDC's goal of reducing the number of new HIV infections in the United States from 40,000 to 20,000 per year by the year 2005.

Since 1994, CDC has supported uniform HIV surveillance for all 50 states and territories. The 2002 *HIV/AIDS Surveillance Report* has been revised to present data on persons with HIV infection, including those in whom HIV infection has progressed to AIDS. Surveillance data on HIV infection provide a more complete picture of the epidemic and the need for prevention and care services than that provided by AIDS data alone. Such comprehensive information is needed to allocate resources and evaluate program effectiveness.

In this report, the term *HIV/AIDS* is used to refer to three categories of cases: (1) new diagnoses of HIV infection only, (2) new diagnoses of HIV infection with later diagnoses of AIDS, and (3) concurrent diagnoses of HIV infection and AIDS. For analyses of HIV/AIDS data, we used data from 30 areas (i.e., 29 states and the U.S. Virgin Islands) that have had HIV infection reporting for a sufficient length of time (i.e., at least since 1998) to allow for stabilization of data collection and for adjustment of the data in order to monitor trends. Tables 1, 2, 8, and 9 summarize diagnoses and prevalence of HIV/AIDS. For analysis of diagnoses of AIDS, we used data from the 50 states, the District of Columbia, U.S. territories and other associated nations.

This report is organized in five sections: (1) diagnoses of HIV/AIDS and AIDS, (2) deaths of persons with AIDS, (3) persons living with HIV/AIDS, AIDS, or HIV infection (not AIDS), (4) length of survival after AIDS diagnosis, and (5) reports of cases of AIDS, HIV infection (not AIDS), and HIV/AIDS. Sections 1 through 3 present point estimates of cases that have been adjusted for reporting delays and for redistribution of cases initially reported without a mode of HIV exposure. CDC routinely adjusts data for the presentation of trends in the epidemic. Data to estimate the number of persons with diagnoses of HIV/AIDS or AIDS, the number of persons living with HIV/AIDS, AIDS, or HIV infection (not AIDS), and the number of deaths among persons with AIDS have been statistically adjusted to correct for delays in the reporting of cases and deaths. To assess trends in diagnoses, deaths, or prevalence, it is preferable to use adjusted data, presented by year of diagnosis instead of year of report, to eliminate artifacts of reporting in the surveillance system. Therefore, readers are encouraged to use tables that present trends by year of diagnosis, year of death, or year-end prevalence. Section 4 presents estimates of survival for persons whose AIDS diagnosis was made during 1998 (Table 13) and persons whose diagnosis was made during 1994–2001 (Figures 2–4). Estimates of the proportion of persons surviving various lengths of time after diagnosis are presented by year of diagnosis, age group, race/ethnicity, and HIV exposure category. Finally, Section 5 presents reports of cases of HIV infection (not AIDS) and cases of AIDS reported through 2002. Areas included in tabulations of reported cases of HIV infection (not AIDS) are based on the date of imple-

mentation of name-based HIV infection reporting. For this report, data from 39 areas were used in Tables 15 and 17 to describe reports of HIV infection (not AIDS). These data have not been adjusted for delays in reporting and are presented by year of report to CDC. Tables that present cases by year of report represent the most up-to-date information reported to CDC; however, cases by year of report do not represent incident cases, the most recent diagnoses, trends, or deaths.

The presentation of the data in tables has also been changed to show trends in diagnoses of HIV/AIDS for the most recent 5-year period and cumulatively. For trends in AIDS diagnoses, we present annual estimates for the most recent 5 years (i.e., 1998 through 2002) and cumulative totals through 2002. For trends in diagnoses of HIV/AIDS, we also present annual estimates of the most recent 4 years (i.e., 1999 through 2002) in 30 areas with confidential HIV infection reporting since 1998, as well as cumulative totals through 2002.

Highlights of Analyses

Diagnoses of HIV/AIDS and AIDS

Diagnoses of HIV/AIDS

From 1999 through 2002, the number of diagnoses of HIV/AIDS in the 30 areas with confidential-name-based HIV infection reporting increased steadily. Table 1 includes data on persons in this category. Diagnoses of HIV/AIDS increased 3.2% from 2001 (25,643) through 2002 (26,464) (Table 1). For the 30 areas, the rate of HIV/AIDS diagnoses in 2002 was 19.1 per 100,000 population.

- By age group, diagnoses of HIV/AIDS decreased among children and in the age group 25–34 years and increased in all other age groups. In 2002, the age group 25–34 years represented 28% of all new diagnoses of HIV/AIDS.
- By race/ethnicity, increases occurred among whites, Hispanics, and Asians/Pacific Islanders and remained stable among blacks. In 2002, blacks accounted for 54% of all new diagnoses of HIV/AIDS.
- By sex, from 1999 through 2002, the number of diagnoses of HIV/AIDS increased 7% among men and remained stable among women. In 2002, men accounted for 71% of all new HIV/AIDS diagnoses among adults in the 30 areas.
- By exposure category, diagnoses of HIV/AIDS increased each year during 1999–2002 among men who have sex with men (MSM) and, to a lesser degree, among heterosexuals. In addition, diagnoses

decreased among injection drug users (IDUs), MSM who were also IDUs, and among children. In 2002, MSM (44%) and persons exposed through heterosexual contact (35%) accounted for 79% of all new diagnoses of HIV/AIDS.

Of all HIV infections in 2001, 39% progressed to AIDS within 12 months after the diagnosis of HIV infection. AIDS was diagnosed within 12 months after the diagnosis of HIV infection for a larger proportion of older persons (35 and older), Hispanics, Asians/Pacific Islanders, American Indians/Alaska Natives, IDUs, and persons exposed through heterosexual contact (Table 2).

Diagnoses of AIDS

During 1998–1999, declines in AIDS incidence began to level, and essentially no change occurred from 1999 through 2001. In 2002, AIDS diagnoses increased 2% (Table 3). The rate of AIDS diagnoses in the United States was 14.1 per 100,000 population (Table 5).

- By age group, from 1998 through 2002, AIDS incidence decreased 61% among children and 24% in the age group 25–34 years, and remained stable in the age group 35–44 years. AIDS incidence increased in the following age groups: 13–14, 15–24, 45–54, 55–64, and 65 years and older. In 2002, the age group 35–44 years represented 41% of all new diagnoses of AIDS.
- By race/ethnicity, from 1998 through 2002, AIDS incidence declined among whites and Hispanics; incidence increased among blacks, Asians/Pacific Islanders, and among American Indians/Alaska Natives. In 2002, rates of AIDS diagnoses ranged from 58.7 per 100,000 of the black population to 4.0 per 100,000 of the Asian/Pacific Islander population.
- By sex, from 1998 through 2002, the number of AIDS diagnoses increased 7% among women and decreased 5% among men. In 2002, men accounted for 74% of all new AIDS diagnoses among adults in the United States. Rates of AIDS diagnoses in 2002 were 26.4 per 100,000 among men and 8.8 per 100,000 among women.
- By exposure category, from 1998 through 2001, AIDS incidence declined among MSM, IDUs, and MSM who were also IDUs. In 2002, incidence among MSM increased slightly. Among persons exposed through heterosexual contact, incidence increased each year from 1998 through 2002.
- By region, AIDS incidence declined in the Northeast and the U.S. territories from 1998 through 2002,

the South through 2000, and the West through 2001. In 2002, compared with 2001, incidence increased 9% in the Midwest, 5% in the South, and 5% in the West.

Deaths

The estimated number of deaths among persons with AIDS in 2002 represented a 14% decline since 1998 (Table 7).

- By age group, the number of deaths declined among most age groups but increased slightly among the age group 45-54.
- By race/ethnicity, the number of deaths among persons with AIDS declined in all racial/ethnic groups.
- By sex and exposure category, the number of deaths declined among MSM, IDUs, and MSM who were also IDUs. Among adults and adolescents exposed through heterosexual contact, the number of deaths leveled from 1998 through 2000, increased in 2001, and then declined in 2002.
- By region, the number of deaths in 2002 (compared with 2001) declined in the Midwest, the South, the West, and U.S. territories and increased slightly in the Northeast.

Persons Living with HIV/AIDS, HIV infection (not AIDS), or AIDS

Persons living with HIV/AIDS

The prevalence of diagnosed HIV/AIDS has increased steadily in the 30 areas with confidential name-based HIV infection reporting (Table 8). At the end of 2002, approximately 281,931 persons were known to be living with HIV/AIDS in the 30 areas with confidential name-based HIV infection reporting since 1998:

- By age group, 42% were in the age group 35-44 years.
- By race/ethnicity, 50% were black, 38% white, 10% Hispanic, and <1% each were American Indian/Alaska Native and Asian/Pacific Islander.
- By sex, 73% of adults with HIV/AIDS were men.
- Of the estimated 206,557 male adults and adolescents (>13 years of age) living with HIV/AIDS, 61% were MSM, 17% were IDUs, 13% had been exposed through heterosexual contact, and 8% were MSM who also were IDUs. Of the 71,996 female adults and adolescents living with HIV/AIDS, 72% had been exposed through heterosexual contact, and 26% had been exposed through injection drug use.

Of the 3,374 children living with HIV/AIDS, 92% had been exposed perinatally.

Prevalence rates of HIV infection (not AIDS)

In the 30 areas with confidential HIV infection reporting, the prevalence rate of HIV infection (not AIDS) among adults was 125.7 per 100,000 at the end of 2002 (Map 1). The rate for adults living with HIV infection (not AIDS) ranged from 12.8 per 100,000 (North Dakota) to 229.7 per 100,000 (Virgin Islands). The prevalence rate of HIV infection (not AIDS) among children was 5.6 per 100,000 population (Map 2). The rate for children living with HIV infection (not AIDS) ranged from 0.4 per 100,000 in Idaho to 20.0 per 100,000 in New Jersey.

Persons living with AIDS

AIDS prevalence has also increased steadily (Table 10). At the end of 2002, approximately 384,906 persons in the United States were living with AIDS:

- By age group, 43% were in the age group 35-44 years.
- By race/ethnicity, 42% were black, 37% white, 20% Hispanic, and <1% each were Asian/Pacific Islander and American Indian/Alaska Native.
- By sex, 77% of adults living with AIDS were men.
- By region, 39% resided in the South, 29% in the Northeast, 19% in the West, 10% in the Midwest, and 3% in the U.S. territories.
- Of the 298,248 male adults and adolescents (>13 years of age) living with AIDS, 58% were MSM, 23% were IDUs, 10% had been exposed through heterosexual contact, and 8% were MSM who were also IDUs. Of the 82,764 female adults and adolescents living with AIDS, 61% had been exposed through heterosexual contact, and 36% had been exposed through injection drug use.

AIDS prevalence rates

- In the United States, at the end of 2002, the AIDS prevalence rate among adults was 160.5 per 100,000 (Map 1). The rate ranged from 2.2 per 100,000 (Pacific Islands) to 1,685.8 per 100,000 (District of Columbia). The rate among children was 4.2 per 100,000 population. The rate among children ranged from 0.4 per 100,000 in Arizona, Colorado, Kansas, and Utah to 80.8 per 100,000 in the District of Columbia.

- CDC. Diagnosis and reporting of HIV and AIDS in 25 states—United States, 1994–2000. *MMWR* 2002;51:595-598.
- CDC. Guidelines for national HIV case surveillance, including monitoring for HIV infection and AIDS. *MMWR* 1999;48(No. RR-13):1-31.
- CDC. *HIV Prevention Strategic Plan Through 2005*. Atlanta: U.S. Department of Health and Human Services, CDC; 2001. Available at www.cdc.gov/hiv/partners/psp.htm.
- CDC. Trends in HIV diagnoses in 29 states—United States, 1999–2002. In press.
- CDC. Update: the AIDS epidemic in the United States, 2001. *MMWR* 2002;51:592-595.
- Janssen RS, Satten GA, Stramer SL, et al. New testing strategy to detect early HIV-1 infection for use in incidence estimates and for clinical and prevention purposes. *JAMA* 1998;280:42-48.
- Karon JM, Fleming PL, Steketee RW, De Cock KM. HIV in the United States at the turn of the century: an epidemic in transition. *Am J Public Health* 2001;91:1060-1068.
- Nakashima AK, Fleming PL. HIV/AIDS surveillance in the United States, 1981–2001. *J Acquir Immune Defic Syndr* 2003;32:68-85.

Table 1. Estimated numbers of diagnoses of HIV/AIDS, by year of diagnosis and selected characteristics of persons, 1999–2002—30 areas with confidential name-based HIV infection reporting

	Year of diagnosis				Cumulative through 2002 ^a
	1999	2000	2001	2002	
Age at diagnosis (yrs)					
<13	187	163	206	162	3,219
13–14	28	31	33	30	391
15–24	2,646	2,803	2,926	2,926	40,896
25–34	7,817	7,386	7,221	7,338	115,468
35–44	9,115	9,289	9,119	9,450	100,294
45–54	3,887	4,212	4,408	4,675	37,763
55–64	1,112	1,250	1,303	1,450	10,647
≥65	382	386	427	432	3,455
Race/ethnicity					
White, not Hispanic	7,718	7,985	8,040	8,347	115,134
Black, not Hispanic	14,398	14,129	14,090	14,398	162,950
Hispanic	2,631	2,920	3,012	3,321	29,315
Asian/Pacific Islander	123	150	140	149	1,262
American Indian/Alaska Native	153	147	142	168	1,795
Exposure category					
Male adult or adolescent					
Male-to-male sexual contact	9,995	10,519	10,974	11,701	134,357
Injection drug use	3,029	2,940	2,715	2,757	43,426
Male-to-male sexual contact and injection drug use	1,066	962	948	943	17,758
Heterosexual contact	3,237	3,252	3,191	3,234	30,337
Other ^b	166	167	167	164	2,694
Subtotal	17,493	17,842	17,995	18,798	228,572
Female adult or adolescent					
Injection drug use	1,651	1,590	1,481	1,418	22,166
Heterosexual contact	5,708	5,777	5,826	5,949	56,942
Other ^b	132	149	136	136	1,678
Subtotal	7,491	7,516	7,442	7,503	80,336
Child(<13 yrs)					
Perinatal	174	151	192	144	2,754
Other ^c	14	12	14	18	465
Subtotal	187	163	206	162	3,219
Total^d	25,174	25,522	25,643	26,464	312,133

Note. These numbers do not represent actual cases in persons with a diagnosis of HIV/AIDS. Rather, these numbers are point estimates of cases diagnosed that have been adjusted for reporting delays and for redistribution of cases in persons initially reported without an identified risk. The estimates have not been adjusted for incomplete reporting.

Data include persons with a diagnosis of HIV infection. This includes persons with a diagnosis of HIV infection only, a diagnosis of HIV infection and a later AIDS diagnosis, and concurrent diagnoses of HIV infection and AIDS.

Since 1998, the following 30 areas have had laws or regulations requiring confidential name-based HIV infection reporting: Alabama, Arizona, Arkansas, Colorado, Florida, Idaho, Indiana, Iowa, Louisiana, Michigan, Minnesota, Mississippi, Missouri, Nebraska, Nevada, New Jersey, New Mexico, North Carolina, North Dakota, Ohio, Oklahoma, South Carolina, South Dakota, Tennessee, Utah, Virginia, West Virginia, Wisconsin, Wyoming, and the U.S. Virgin Islands. Since July 1997, Florida has had confidential name-based HIV infection reporting only for new diagnoses.

^a Includes persons with a diagnosis of HIV infection, from the beginning of the epidemic through 2002.

^b Includes hemophilia, blood transfusion, perinatal, and risk not reported or not identified.

^c Includes hemophilia, blood transfusion, and risk not reported or not identified.

^d Includes persons of unknown or multiple race and of unknown sex. Cumulative total includes 1677 persons of unknown or multiple race and 6 persons of unknown sex. Because column totals were calculated independently of the values for the subpopulations, the values in each column may not sum to the column total.

Table 2. Estimated distribution of persons with and persons without a diagnosis of AIDS within 12 months of diagnosis of HIV infection, by selected characteristics, 2001—30 areas with confidential name-based HIV infection reporting

	AIDS diagnoses					
	≥12 Months after diagnosis of HIV infection		<12 Months after diagnosis of HIV infection		Total	
	No.	(%) ^a	No.	(%) ^a	No.	(%) ^a
Age at diagnosis (yrs)						
<13	160	77	47	23	206	100
13—14	25	75	8	25	33	100
15—24	2,427	83	500	17	2,926	100
25—34	4,757	66	2,464	34	7,221	100
35—44	5,175	57	3,942	43	9,118	100
45—54	2,210	50	2,198	50	4,408	100
55—64	577	44	726	56	1,303	100
≥65	189	44	238	56	427	100
Race/ethnicity						
White, not Hispanic	4,817	60	3,222	40	8,039	100
Black, not Hispanic	8,627	61	5,463	39	14,090	100
Hispanic	1,719	57	1,293	43	3,012	100
Asian/Pacific Islander	82	58	58	42	140	100
American Indian/Alaska Native	74	52	68	48	142	100
Exposure category						
Male adult or adolescent						
Male-to-male sexual contact	6,461	59	4,512	41	10,973	100
Injection drug use	1,419	52	1,296	48	2,715	100
Male-to-male sexual contact and injection drug use	554	58	394	42	948	100
Heterosexual contact	1,858	58	1,333	42	3,191	100
Other ^b	81	48	87	52	167	100
Subtotal	10,373	58	7,621	42	17,994	100
Female adult or adolescent						
Injection drug use	948	64	533	36	1,481	100
Heterosexual contact	3,974	68	1,852	32	5,826	100
Other ^b	65	48	70	52	136	100
Subtotal	4,987	67	2,455	33	7,442	100
Child(<13 yrs)						
Perinatal	148	77	44	23	192	100
Other ^c	12	83	2	17	14	100
Subtotal	160	77	47	23	206	100
Total^d	15,520	61	10,123	39	25,642	100

Note. These numbers do not represent actual cases in persons with a diagnosis of HIV infection or AIDS. Rather, these numbers are point estimates of cases diagnosed that have been adjusted for reporting delays and for redistribution of cases in persons initially reported without an identified risk. The estimates have not been adjusted for incomplete reporting.

Data include persons in whom AIDS has developed and persons whose first diagnosis of HIV infection and the diagnosis of AIDS were made at the same time.

Data exclude 1 person whose month of HIV infection diagnosis is unknown.

Since 1998, the following 30 areas have had laws or regulations requiring confidential name-based HIV infection reporting: Alabama, Arizona, Arkansas, Colorado, Florida, Idaho, Indiana, Iowa, Louisiana, Michigan, Minnesota, Mississippi, Missouri, Nebraska, Nevada, New Jersey, New Mexico, North Carolina, North Dakota, Ohio, Oklahoma, South Carolina, South Dakota, Tennessee, Utah, Virginia, West Virginia, Wisconsin, Wyoming, and the U.S. Virgin Islands. Since July 1997, Florida has had confidential name-based HIV infection reporting only for new diagnoses.

^a Percentages represent proportions of the total number of diagnoses of HIV/AIDS made during 2001 for the corresponding group (see row entries).

^b Includes hemophilia, blood transfusion, perinatal, and risk not reported or not identified.

^c Includes hemophilia, blood transfusion, and risk not reported or not identified.

^d Includes 220 persons of unknown or multiple race. Because column totals were calculated independently of the values for the subpopulations, the values in each column may not sum to the column total.

Table 3. Estimated numbers of diagnoses of AIDS, by year of diagnosis and selected characteristics of persons, 1998–2002— United States

	Year of diagnosis					Cumulative through 2002 ^a
	1998	1999	2000	2001	2002	
Age at diagnosis (yrs)						
<13	238	183	118	110	92	9,300
13–14	54	58	57	75	76	839
15–24	1,591	1,527	1,625	1,638	1,833	35,460
25–34	12,671	11,342	10,373	10,063	9,688	301,278
35–44	17,670	17,181	17,280	17,057	17,398	347,860
45–54	8,016	8,065	8,581	9,015	9,488	138,386
55–64	2,235	2,218	2,417	2,481	2,773	40,584
≥65	751	739	787	788	789	12,868
Race/ethnicity						
White, not Hispanic	13,553	12,626	12,088	11,671	11,929	364,458
Black, not Hispanic	20,672	19,953	20,353	20,594	21,169	347,491
Hispanic	8,460	8,140	8,173	8,279	8,242	163,940
Asian/Pacific Islander	346	380	388	441	478	6,924
American Indian/Alaska Native	157	164	185	188	206	2,875
Exposure category						
Male adult or adolescent						
Male-to-male sexual contact	17,357	16,378	16,076	16,296	16,944	420,790
Injection drug use	8,462	7,965	7,689	7,115	6,945	172,351
Male-to-male sexual contact and injection drug use	2,466	2,275	2,006	2,010	1,898	59,719
Heterosexual contact	4,033	4,136	4,258	4,554	4,937	50,793
Other ^b	384	365	367	361	365	14,350
Subtotal	32,703	31,119	30,396	30,335	31,089	718,002
Female adult or adolescent						
Injection drug use	3,740	3,516	3,533	3,387	3,180	67,917
Heterosexual contact	6,300	6,260	6,911	7,103	7,476	84,835
Other ^b	243	236	281	292	299	6,519
Subtotal	10,283	10,012	10,725	10,783	10,955	159,271
Child(<13 yrs)						
Perinatal	236	181	115	106	90	8,629
Other ^c	1	2	3	4	2	671
Subtotal	238	183	118	110	92	9,300
Region of residence						
Northeast	11,879	11,856	12,400	11,460	10,909	273,248
Midwest	4,061	4,065	4,234	4,305	4,707	87,931
South	18,429	17,184	16,714	17,696	18,546	317,244
West	7,375	6,903	6,646	6,427	6,719	179,212
U.S. dependencies, possessions, and associated nations	1,482	1,305	1,245	1,339	1,256	28,941
Total^d	43,225	41,314	41,239	41,227	42,136	886,575

Note. These numbers do not represent actual cases in persons with a diagnosis of AIDS. Rather, these numbers are point estimates of cases diagnosed that have been adjusted for reporting delays and for redistribution of cases in persons initially reported without an identified risk. The estimates have not been adjusted for incomplete reporting.

^a Includes persons with a diagnosis of AIDS, from the beginning of the epidemic through 2002.

^b Includes hemophilia, blood transfusion, perinatal, and risk not reported or not identified.

^c Includes hemophilia, blood transfusion, and risk not reported or not identified.

^d Includes persons of unknown or multiple race and of unknown sex. Cumulative total includes 887 persons of unknown or multiple race and 2 persons of unknown sex. Because column totals were calculated independently of the values for the subpopulations, the values in each column may not sum to the column total.

Table 4. Estimated numbers of diagnoses of AIDS in children <13 years of age, by year of diagnosis and exposure category, 1998–2002—United States

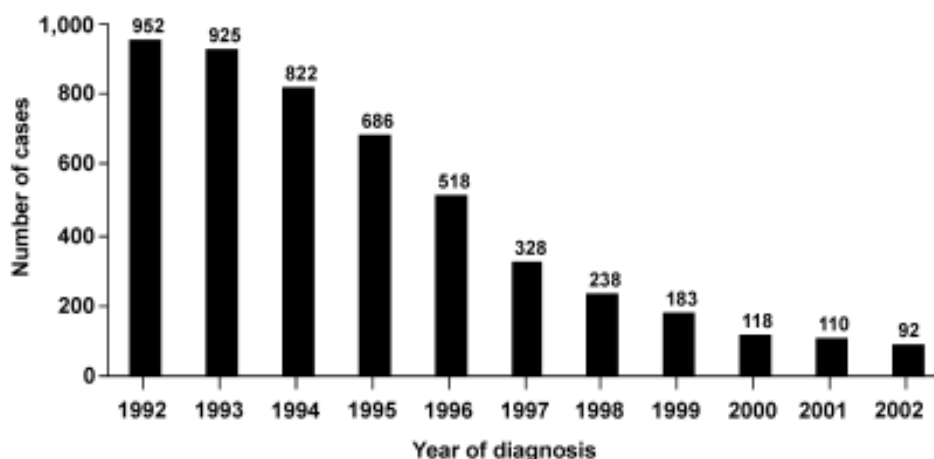
	Year of diagnosis					Cumulative through 2002 ^a
	1998	1999	2000	2001	2002	
Race/ethnicity						
White, not Hispanic	33	19	13	16	7	1,606
Black, not Hispanic	156	129	85	70	58	5,476
Hispanic	47	33	18	22	24	2,111
Asian/Pacific Islander	0	1	2	2	1	59
American Indian/Alaska Native	1	0	0	0	0	31
Exposure category						
Hemophilia/coagulation disorder	0	0	0	0	0	236
Mother with, or at risk for, HIV infection	236	181	115	106	90	8,629
<i>Injection drug use</i>	46	43	20	13	9	3,309
<i>Sex with injection drug user</i>	31	24	15	5	5	1,526
<i>Sex with bisexual male</i>	6	6	2	3	4	202
<i>Sex with person with hemophilia</i>	1	2	0	1	0	35
<i>Sex with HIV-infected transfusion recipient</i>	1	0	0	0	0	26
<i>Sex with HIV-infected person, risk not specified</i>	62	50	36	32	32	1,453
<i>Receipt of blood transfusion, blood components, or tissue</i>	0	1	2	2	3	159
<i>Has HIV infection, risk not specified</i>	89	55	40	50	37	1,920
Receipt of blood transfusion, blood components, or tissue	1	0	1	0	1	390
Other/risk not reported or identified	0	2	2	3	0	45
Total^b	238	183	118	110	92	9,300

Note. These numbers do not represent actual cases in persons with a diagnosis of AIDS. Rather, these numbers are point estimates of cases diagnosed that have been adjusted for reporting delays and for redistribution of cases in persons initially reported without an identified risk. The estimates have not been adjusted for incomplete reporting.

^a Includes children with a diagnosis of AIDS, from the beginning of the epidemic through 2002.

^b Includes children of unknown or multiple race. Cumulative total includes 17 children of unknown or multiple race. Because column totals were calculated independently of the values for the subpopulations, the values in each column may not sum to the column total.

Figure 1. Estimated numbers of diagnoses of AIDS in children <13 years of age, by year of diagnosis, 1992–2002—United States



Note. These numbers do not represent actual cases in children with a diagnosis of AIDS. Rather, these numbers are point estimates of cases diagnosed that have been adjusted for reporting delays. The estimates have not been adjusted for incomplete reporting. The 1993 AIDS surveillance case definition change affected only cases in adults and adolescents, not the cases in children.

Table 5. Estimated numbers of diagnoses and rates (per 100,000 population) of AIDS, by persons' race/ethnicity, age category, and sex, 2002—United States

Race/ethnicity	Adults or adolescents						Children (<13 yrs)		Total	
	Males		Females		Total		No.	Rate	No.	Rate
	No.	Rate	No.	Rate	No.	Rate				
White, not Hispanic	10,095	12.3	1,801	2.1	11,896	7.0	7	0.0	11,903	5.9
Black, not Hispanic	13,890	108.4	7,159	48.6	21,049	76.4	57	0.7	21,106	58.7
Hispanic	5,508	39.7	1,471	11.3	6,979	26.0	19	0.2	6,998	19.2
Asian/Pacific Islander	397	8.6	75	1.5	471	4.9	1	0.1	473	4.0
American Indian/Alaska Native	151	16.9	54	5.8	205	11.2	0	0	205	8.5
Total^a	30,120	26.4	10,589	8.8	40,709	17.3	84	0.2	40,793	14.1

Note. These numbers do not represent actual cases in persons with a diagnosis of AIDS. Rather, these numbers are point estimates of cases diagnosed that have been adjusted for reporting delays. The estimates have not been adjusted for incomplete reporting. Data exclude cases from the U.S dependencies, possessions, and associated nations, as well as cases in persons whose state or area of residence is unknown, because of the lack of census information by race and age categories for these areas.

^a Includes 108 persons of unknown or multiple race. Because column totals were calculated independently of the values for the subpopulations, the values in each column may not sum to the column total.

Table 6. Estimated numbers of diagnoses of AIDS in adult or adolescent Hispanics, by diagnosis during 2002, exposure category, and place of birth—United States

Exposure category	Place of birth											
	United States		Central/South America		Cuba		Mexico		Puerto Rico		Total ^a	
	No.	%	No.	%	No.	%	No.	%	No.	%	No.	%
Male-to-male sexual contact	1,198	39	376	52	67	50	767	57	292	17	3,202	39
Injection drug use	898	29	82	11	32	24	170	13	788	45	2,235	27
Male-to-male sexual contact and injection drug use	133	4	14	2	7	5	55	4	58	3	299	4
Heterosexual contact	831	27	237	33	28	21	322	24	600	34	2,365	29
Other ^b	43	1	15	2	1	1	30	2	8	0	116	1
Total^c	3,103	100	724	100	135	100	1,344	100	1,747	100	8,218	100

Note. These numbers do not represent actual cases in persons with a diagnosis of AIDS. Rather, these numbers are point estimates of cases diagnosed that have been adjusted for reporting delays and for redistribution of cases in persons initially reported without an identified risk. The estimates have not been adjusted for incomplete reporting.

^a Includes 189 persons whose place of birth is not among those listed and 976 whose place of birth is unknown.

^b Includes hemophilia, blood transfusion, perinatal, and risk not reported or not identified.

^c Because column totals were calculated independently of the values for the subpopulations, the values in each column may not sum to the column total.

Table 7. Estimated numbers of deaths of persons with AIDS, by year of death and selected characteristics, 1998–2002—United States

	Year of death					Cumulative through 2002 ^a
	1998	1999	2000	2001	2002	
Age at death (yrs)						
<13	104	102	51	49	33	5,071
13–14	9	19	10	5	10	244
15–24	258	232	206	261	190	9,507
25–34	3,785	3,252	2,765	2,377	1,971	139,977
35–44	7,991	7,679	6,998	7,077	6,401	207,324
45–54	4,784	5,004	5,082	5,202	5,395	97,027
55–64	1,511	1,546	1,584	1,758	1,728	31,179
≥65	562	622	652	673	641	11,340
Race/ethnicity						
White, not Hispanic	6,228	5,800	5,331	5,061	4,555	223,623
Black, not Hispanic	9,116	9,097	8,723	8,915	8,566	185,080
Hispanic	3,449	3,353	3,118	3,236	3,056	87,888
Asian/Pacific Islander	125	116	107	111	93	3,350
American Indian/Alaska Native	79	79	61	70	72	1,424
Exposure category						
Male adult or adolescent						
Male-to-male sexual contact	7,120	6,615	6,098	5,971	5,418	249,198
Injection drug use	4,735	4,501	4,145	4,129	4,038	103,714
Male-to-male sexual contact and injection drug use	1,338	1,319	1,287	1,262	1,082	36,224
Heterosexual contact	1,300	1,358	1,363	1,462	1,384	20,820
Other ^b	222	203	210	177	160	9,797
Subtotal	14,715	13,997	13,104	13,001	12,083	419,754
Female adult or adolescent						
Injection drug use	1,970	2,083	1,936	1,947	1,933	37,758
Heterosexual contact	2,100	2,140	2,134	2,280	2,197	34,661
Other ^b	97	104	99	101	95	4,087
Subtotal	4,167	4,327	4,169	4,328	4,226	76,507
Child(<13 yrs)						
Perinatal	117	122	71	69	59	4,882
Other ^c	6	8	4	4	4	526
Subtotal	122	130	75	73	62	5,407
Region of residence						
Northeast	5,681	5,814	5,089	5,263	5,419	161,971
Midwest	1,936	1,700	1,659	1,697	1,315	48,415
South	7,515	7,263	7,289	7,201	6,671	168,670
West	3,092	2,967	2,624	2,490	2,259	104,559
U.S. dependencies, possessions, and associated nations	781	710	687	752	707	18,054
Total^d	19,005	18,454	17,347	17,402	16,371	501,669

Note. These numbers do not represent actual cases in persons who died with AIDS. Rather, these numbers are point estimates of cases in persons who died with AIDS that have been adjusted for delays in reporting of deaths and for redistribution of cases in persons initially reported without an identified risk. The estimates have not been adjusted for incomplete reporting.

^a Includes persons who died with AIDS, from the beginning of the epidemic through 2002.

^b Includes hemophilia, blood transfusion, perinatal, and risk not reported or not identified.

^c Includes hemophilia, blood transfusion, and risk not reported or not identified.

^d Includes persons of unknown or multiple race and of unknown sex. Cumulative total includes 304 persons of unknown or multiple race and 1 person of unknown sex. Because column totals were calculated independently of the values for the subpopulations, the values in each column may not sum to the column total.

Table 8. Estimated numbers of persons living with HIV/AIDS by year and selected characteristics, 1999–2002—30 areas with confidential name-based HIV infection reporting

	1999	2000	2001	2002
Age as of end of year (yrs)				
<13	2,517	2,488	2,451	2,363
13—14	242	291	394	467
15—24	8,984	9,440	9,901	10,295
25—34	59,153	57,347	56,314	55,789
35—44	98,193	106,376	112,845	118,714
45—54	45,171	53,002	61,547	70,472
55—64	10,732	12,830	15,240	18,591
≥65	2,985	3,635	4,407	5,241
Race/ethnicity				
White, not Hispanic	91,038	96,424	101,943	107,992
Black, not Hispanic	112,483	121,903	131,360	141,184
Hispanic	21,256	23,449	25,732	28,364
Asian/Pacific Islander	791	923	1,045	1,181
American Indian/Alaska Native	1,224	1,339	1,431	1,565
Exposure category				
Male adult or adolescent				
Male-to-male sexual contact	100,582	108,174	116,250	125,268
Injection drug use	31,554	32,880	34,093	35,380
Male-to-male sexual contact and injection drug use	14,900	15,290	15,696	16,143
Heterosexual contact	19,594	22,021	24,387	26,843
Other ^a	2,673	2,735	2,819	2,922
Subtotal	169,304	181,099	193,244	206,557
Female adult or adolescent				
Injection drug use	16,666	17,504	18,209	18,831
Heterosexual contact	37,657	42,239	46,841	51,538
Other ^a	1,306	1,414	1,513	1,627
Subtotal	55,629	61,158	66,563	71,996
Child(<13 yrs)				
Perinatal	2,741	2,855	3,006	3,114
Other ^b	297	291	279	260
Subtotal	3,038	3,146	3,285	3,374
Total^c	227,976	245,409	263,098	281,931

Note. These numbers do not represent actual cases in persons living with HIV/AIDS. Rather, these numbers are point estimates of persons living with HIV/AIDS that have been adjusted for reporting delays and for redistribution of cases in persons initially reported without an identified risk. The estimates have not been adjusted for incomplete reporting.

Data include persons with a diagnosis of HIV infection. This includes persons with a diagnosis of HIV infection only, a diagnosis of HIV infection and a later AIDS diagnosis, and concurrent diagnoses of HIV infection and AIDS.

Since 1998, the following 30 areas have had laws or regulations requiring confidential name-based HIV infection reporting: Alabama, Arizona, Arkansas, Colorado, Florida, Idaho, Indiana, Iowa, Louisiana, Michigan, Minnesota, Mississippi, Missouri, Nebraska, Nevada, New Jersey, New Mexico, North Carolina, North Dakota, Ohio, Oklahoma, South Carolina, South Dakota, Tennessee, Utah, Virginia, West Virginia, Wisconsin, Wyoming, and the U.S. Virgin Islands. Since July 1997, Florida has had confidential name-based HIV infection reporting only for new diagnoses.

^a Includes hemophilia, blood transfusion, perinatal, and risk not reported or not identified.

^b Includes hemophilia, blood transfusion, and risk not reported or not identified.

^c Includes persons of unknown or multiple race and of unknown sex. Because column totals were calculated independently of the values for the subpopulations, the values in each column may not sum to the column total.

Table 9. Estimated numbers of persons living with HIV/AIDS at the end of 2002, by race/ethnicity, sex, and exposure category—30 areas with confidential name-based HIV infection reporting

Exposure category	White, not Hispanic		Black, not Hispanic		Hispanic		Asian/Pacific Islander		American Indian/Alaska Native		Total ^a	
	No.	%	No.	%	No.	%	No.	%	No.	%	No.	%
Male adult or adolescent												
Male-to-male sexual contact	68,988	76	41,863	47	12,448	57	593	66	698	60	125,268	61
Injection drug use	8,708	10	21,137	24	4,982	23	118	13	178	15	35,380	17
Male-to-male sexual contact and injection drug use	8,179	9	6,337	7	1,348	6	38	4	169	15	16,143	8
Heterosexual contact	4,003	4	19,360	22	3,049	14	125	14	96	8	26,843	13
Other ^b	1,491	2	1,173	1	195	1	23	3	19	2	2,922	1
Subtotal	91,369	100	89,870	100	22,023	100	897	100	1,160	100	206,557	100
Female adult or adolescent												
Injection drug use	5,369	34	11,657	24	1,531	26	46	17	140	36	18,831	26
Heterosexual contact	10,210	64	36,257	74	4,328	72	208	77	241	62	51,538	72
Other ^b	421	3	1,034	2	142	2	15	6	7	2	1,627	2
Subtotal	16,000	100	48,948	100	6,001	100	269	100	388	100	71,996	100
Child (<13 yrs)												
Perinatal	525	84	2,239	95	317	93	10	67	13	81	3,114	92
Other ^c	99	16	126	5	24	7	5	33	3	19	260	8
Subtotal	623	100	2,364	100	341	100	15	100	16	100	3,374	100
Total^d	107,992		141,184		28,364		1,181		1,565		281,931	

Note. These numbers do not represent actual cases in persons living with HIV/AIDS. Rather, these numbers are point estimates of persons living with HIV/AIDS that have been adjusted for reporting delays and for redistribution of cases in persons initially reported without an identified risk. The estimates have not been adjusted for incomplete reporting.

Data include persons with a diagnosis of HIV infection. This includes persons with a diagnosis of HIV infection only, a diagnosis of HIV infection and a later AIDS diagnosis, and concurrent diagnoses of HIV infection and AIDS.

Since 1998, the following 30 areas have had laws or regulations requiring confidential name-based HIV infection reporting: Alabama, Arizona, Arkansas, Colorado, Florida, Idaho, Indiana, Iowa, Louisiana, Michigan, Minnesota, Mississippi, Missouri, Nebraska, Nevada, New Jersey, New Mexico, North Carolina, North Dakota, Ohio, Oklahoma, South Carolina, South Dakota, Tennessee, Utah, Virginia, West Virginia, Wisconsin, Wyoming, and the U.S. Virgin Islands. Since July 1997, Florida has had confidential name-based HIV infection reporting only for new diagnoses.

^a Includes 1646 persons of unknown or multiple race.

^b Includes hemophilia, blood transfusion, perinatal, and risk not reported or not identified.

^c Includes hemophilia, blood transfusion, and risk not reported or not identified.

^d Includes 5 persons of unknown sex. Because column totals were calculated independently of the values for the subpopulations, the values in each column may not sum to the column total.

Table 10. Estimated numbers of persons living with AIDS, by year and selected characteristics, 1998–2002—United States

	1998	1999	2000	2001	2002
Age as of end of year (yrs)					
<13	3,128	3,006	2,816	2,571	2,292
13–14	372	438	513	642	732
15–24	4,657	4,675	4,951	5,204	5,653
25–34	63,610	60,056	56,552	53,837	51,851
35–44	130,403	141,434	151,476	158,962	165,348
45–54	66,105	77,334	89,716	102,991	116,927
55–64	16,033	19,330	23,030	27,462	33,201
≥65	4,256	5,152	6,263	7,471	8,902
Race/ethnicity					
White, not Hispanic	113,267	120,094	126,851	133,461	140,835
Black, not Hispanic	115,644	126,499	138,129	149,808	162,412
Hispanic	55,980	60,767	65,823	70,865	76,052
Asian/Pacific Islander	2,314	2,578	2,858	3,189	3,574
American Indian/Alaska Native	989	1,074	1,198	1,316	1,450
Exposure category					
Male adult or adolescent					
Male-to-male sexual contact	130,000	139,763	149,742	160,067	171,592
Injection drug use	55,735	59,199	62,743	65,729	68,636
Male-to-male sexual contact and injection drug use	20,256	21,212	21,931	22,679	23,495
Heterosexual contact	17,656	20,433	23,328	26,420	29,973
Other ^a	3,846	4,008	4,164	4,348	4,553
Subtotal	227,494	244,615	261,907	279,242	298,248
Female adult or adolescent					
Injection drug use	24,441	25,874	27,471	28,912	30,158
Heterosexual contact	31,175	35,295	40,072	44,895	50,174
Other ^a	1,722	1,854	2,036	2,227	2,432
Subtotal	57,338	63,023	69,579	76,035	82,764
Child(<13 yrs)					
Perinatal	3,577	3,635	3,680	3,716	3,748
Other ^b	154	149	147	147	145
Subtotal	3,731	3,784	3,827	3,864	3,893
Region of residence					
Northeast	86,237	92,280	99,590	105,787	111,277
Midwest	28,577	30,941	33,517	36,125	39,516
South	106,857	116,778	126,203	136,698	148,573
West	58,296	62,232	66,255	70,193	74,652
U.S. dependencies, possessions, and associated nations	8,597	9,193	9,751	10,338	10,887
Total^c	288,565	311,424	335,316	359,141	384,906

Note. These numbers do not represent actual cases in persons living with AIDS. Rather, these numbers are point estimates of persons living with AIDS that have been adjusted for reporting delays and for redistribution of cases in persons initially reported without an identified risk. The estimates have not been adjusted for incomplete reporting.

^a Includes hemophilia, blood transfusion, perinatal, and risk not reported or not identified.

^b Includes hemophilia, blood transfusion, and risk not reported or not identified.

^c Includes persons of unknown or multiple race and of unknown sex. Because column totals were calculated independently of the values for the subpopulations, the values in each column may not sum to the column total.

Table 11. Estimated numbers of persons living with AIDS at the end of 2002, by race/ethnicity, sex, and exposure category—United States

Exposure category	White, not Hispanic		Black, not Hispanic		Hispanic		Asian/Pacific Islander		American Indian/Alaska Native		Total ^a	
	No.	%	No.	%	No.	%	No.	%	No.	%	No.	%
Male adult or adolescent												
Male-to-male sexual contact	92,528	75	46,920	42	29,073	49	2,167	72	642	57	171,592	58
Injection drug use	13,377	11	35,691	32	18,976	32	304	10	197	17	68,636	23
Male-to-male sexual contact and injection drug use	10,966	9	8,421	8	3,748	6	140	5	194	17	23,495	8
Heterosexual contact	4,536	4	18,075	16	6,913	12	326	11	72	6	29,973	10
Other ^b	2,077	2	1,728	2	632	1	84	3	19	2	4,553	2
Subtotal	123,486	100	110,836	100	59,343	100	3,021	100	1,125	100	298,248	100
Female adult or adolescent												
Injection drug use	6,911	41	17,497	36	5,479	35	91	17	133	42	30,158	36
Heterosexual contact	9,293	55	30,254	62	9,986	63	390	73	169	54	50,174	61
Other ^b	579	3	1,382	3	402	3	52	10	13	4	2,432	3
Subtotal	16,783	100	49,133	100	15,867	100	533	100	315	100	82,764	100
Child (<13 yrs)												
Perinatal	506	89	2,397	98	803	95	18	94	10	100	3,748	96
Other ^c	59	11	46	2	38	5	1	6	0	0	145	4
Subtotal	566	100	2,443	100	841	100	19	100	10	100	3,893	100
Total^d	140,835		162,412		76,052		3,574		1,450		384,906	

Note. These numbers do not represent actual cases in persons living with AIDS. Rather, these numbers are point estimates of persons living with AIDS that have been adjusted for reporting delays and for redistribution of cases in persons initially reported without an identified risk. The estimates have not been adjusted for incomplete reporting.

^a Includes 583 persons of unknown or multiple race.

^b Includes hemophilia, blood transfusion, perinatal, and risk not reported or not identified.

^c Includes hemophilia, blood transfusion, and risk not reported or not identified.

^d Includes 1 person of unknown sex. Because column totals were calculated independently of the values for the subpopulations, the values in each column may not sum to the column total.

Table 12. Estimated numbers of persons living with HIV infection (not AIDS) or with AIDS at the end of 2002, by state or area of residence and age category—United States

Area of residence	Living with HIV infection (not AIDS) ^a			Living with AIDS		
	Adults/ Adolescents	Children <13 years old	Total	Adults/ Adolescents	Children <13 years old	Total
Alabama	5,683	31	5,714	3,641	19	3,660
Alaska	—	—	—	251	2	252
Arizona	5,157	40	5,197	4,311	5	4,316
Arkansas	2,189	14	2,202	1,822	16	1,837
California	—	—	—	52,562	154	52,716
Colorado	5,934	15	5,949	3,461	3	3,465
Connecticut	—	—	—	6,539	40	6,579
Delaware	—	—	—	1,519	12	1,531
District of Columbia	—	—	—	8,164	70	8,234
Florida ^b	28,945	244	29,189	40,607	408	41,015
Georgia	—	—	—	12,619	64	12,683
Hawaii	—	—	—	1,241	5	1,247
Idaho	371	1	372	262	0	262
Illinois	—	—	—	13,629	89	13,718
Indiana	3,714	29	3,743	3,410	19	3,429
Iowa	459	3	462	683	3	686
Kansas	—	—	—	1,111	2	1,113
Kentucky	—	—	—	2,137	12	2,150
Louisiana	7,804	102	7,906	6,856	46	6,902
Maine	—	—	—	488	4	492
Maryland	—	—	—	11,696	102	11,798
Massachusetts	—	—	—	7,988	38	8,025
Michigan	5,500	77	5,577	5,371	25	5,395
Minnesota	2,247	25	2,272	1,807	11	1,818
Mississippi	4,082	30	4,112	2,581	20	2,602
Missouri	4,672	45	4,717	4,822	16	4,838
Montana	—	—	—	181	0	181
Nebraska	588	4	592	563	4	567
Nevada	3,255	19	3,274	2,496	7	2,502
New Hampshire	—	—	—	504	2	506
New Jersey	14,405	313	14,718	15,343	142	15,485
New Mexico	783	0	783	1,061	5	1,066
New York	—	—	—	63,002	410	63,412
North Carolina	11,018	94	11,112	7,099	30	7,128
North Dakota	67	1	68	46	1	47
Ohio	7,181	70	7,251	5,945	33	5,978
Oklahoma	2,524	17	2,541	1,902	6	1,908
Oregon	—	—	—	2,443	5	2,448
Pennsylvania	—	—	—	15,223	139	15,362
Rhode Island	—	—	—	1,049	9	1,058
South Carolina	6,846	68	6,914	5,832	30	5,863
South Dakota	186	2	188	98	1	99
Tennessee	6,407	67	6,474	5,628	11	5,639
Texas	—	—	—	27,249	109	27,358
Utah	718	10	728	1,083	2	1,085
Vermont	—	—	—	233	3	236
Virginia	8,739	59	8,798	7,382	61	7,443
Washington	—	—	—	4,881	7	4,889
West Virginia	633	6	639	594	5	599
Wisconsin	2,300	24	2,324	1,782	14	1,797
Wyoming	86	1	87	89	2	91
Subtotal	142,493	1,411	143,904	371,286	2,224	373,510

Table 12. Estimated numbers of persons living with HIV infection (not AIDS) or with AIDS at the end of 2002, by state or area of residence and age category—United States (continued)

Area of residence	Living with HIV infection (not AIDS) ^a			Living with AIDS		
	Adults/ Adolescents	Children <13 years old	Total	Adults/ Adolescents	Children <13 years old	Total
U.S. dependencies, possessions, and associated nations						
Guam	—	—	—	34	1	35
Pacific Islands, U.S.	—	—	—	5	0	5
Puerto Rico	—	—	—	10,497	63	10,560
Virgin Islands, U.S.	220	5	225	280	2	282
Total^c	142,713	1,416	144,129	382,614	2,292	384,906

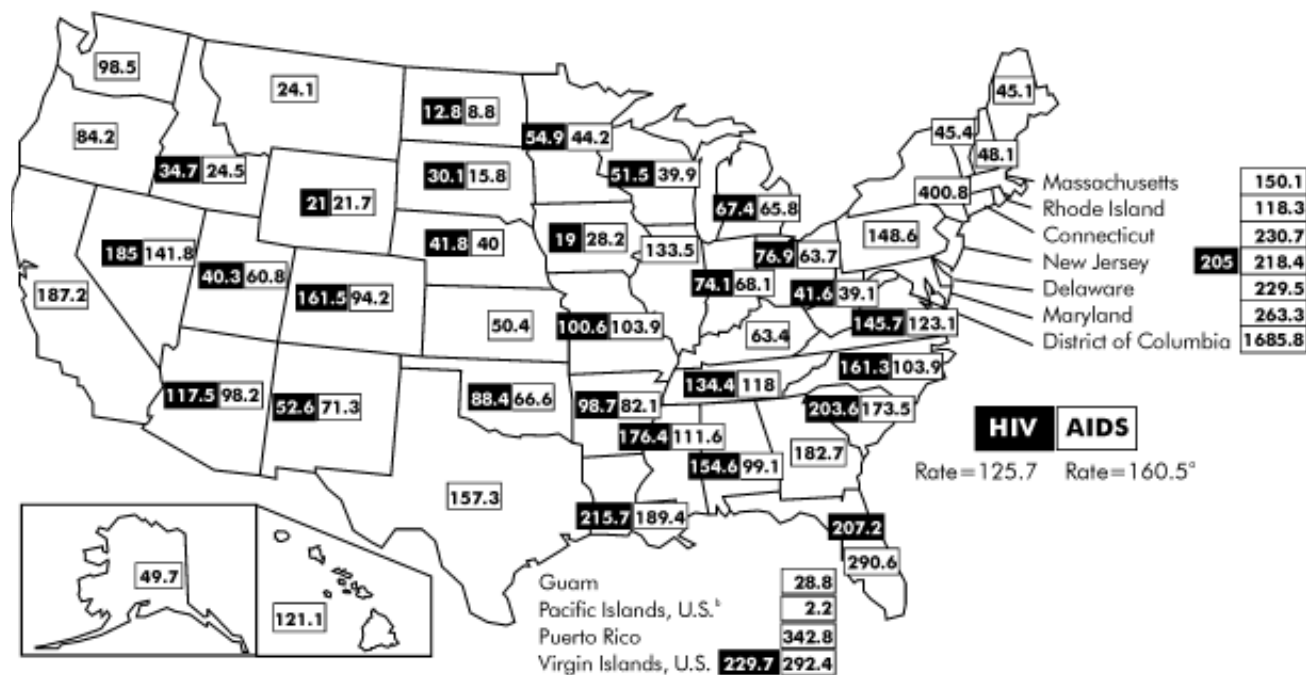
Note. These numbers do not represent actual cases in persons living with HIV infection (not AIDS) or with AIDS. Rather, these numbers are point estimates of persons living with HIV infection (not AIDS) or AIDS that have been adjusted for reporting delays. The estimates have not been adjusted for incomplete reporting.

^a Includes only persons living with HIV infection that has not progressed to AIDS. Since 1998, the following 30 areas have had laws or regulations requiring confidential name-based HIV infection reporting: Alabama, Arizona, Arkansas, Colorado, Florida, Idaho, Indiana, Iowa, Louisiana, Michigan, Minnesota, Mississippi, Missouri, Nebraska, Nevada, New Jersey, New Mexico, North Carolina, North Dakota, Ohio, Oklahoma, South Carolina, South Dakota, Tennessee, Utah, Virginia, West Virginia, Wisconsin, Wyoming, and the U.S. Virgin Islands.

^b Florida (since July 1997) has had confidential name-based HIV infection reporting only for new diagnoses.

^c Total number of persons living with AIDS includes persons whose area of residence is unknown. Because column totals were calculated independently of the values for the subpopulations, the values in each column may not sum to the column total.

Map 1. Estimated rates for adults and adolescents living with HIV infection (not AIDS) or with AIDS (per 100,000 population), 2002—United States

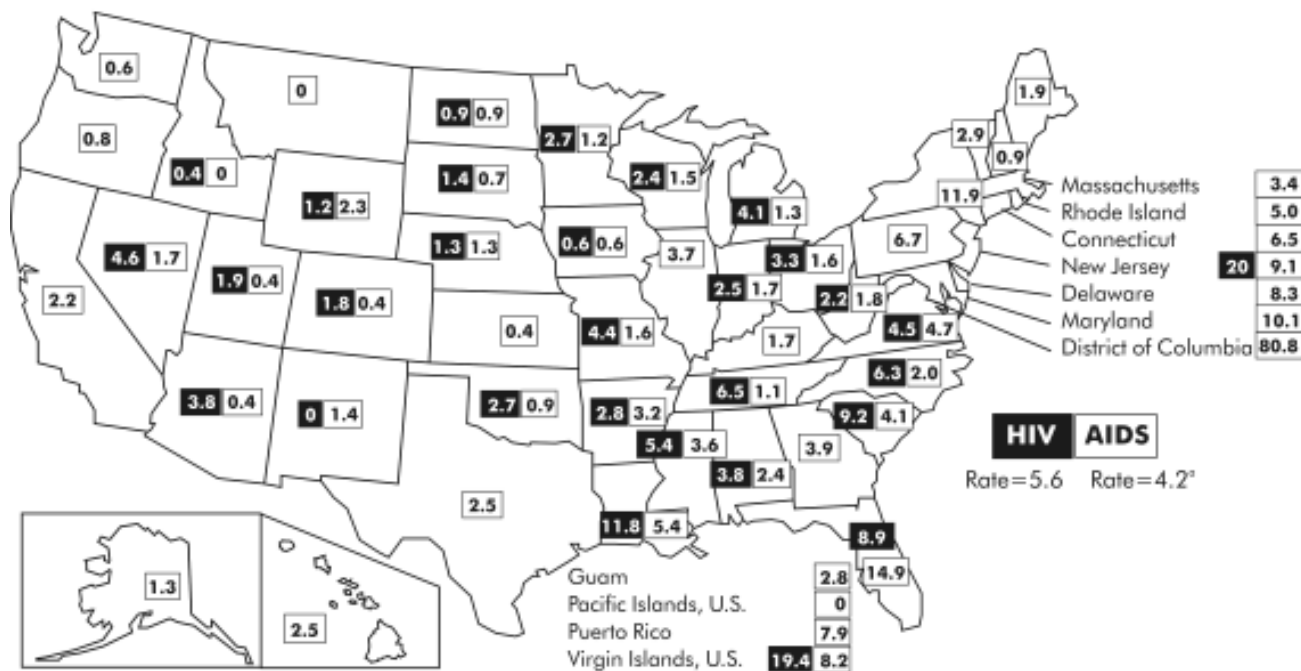


Note. Rates adjusted for reporting delays. Rates of HIV infection include only persons living with HIV infection that has not progressed to AIDS. Rates are calculated for the following 30 areas with laws or regulations requiring confidential name-based HIV infection reporting since 1998: Alabama, Arizona, Arkansas, Colorado, Florida, Idaho, Indiana, Iowa, Louisiana, Michigan, Minnesota, Mississippi, Missouri, Nebraska, Nevada, New Jersey, New Mexico, North Carolina, North Dakota, Ohio, Oklahoma, South Carolina, South Dakota, Tennessee, Utah, Virginia, West Virginia, Wisconsin, Wyoming, and the U.S. Virgin Islands.

*Includes persons whose area of residence is unknown.

†Includes American Samoa, Marshall Islands, Micronesia, and Northern Mariana Islands.

Map 2. Estimated rates for children <13 years of age living with HIV infection (not AIDS) or with AIDS (per 100,000 population), 2002—United States



Note. Rates adjusted for reporting delays. Rates of HIV infection include only children living with HIV infection that has not progressed to AIDS. Rates are calculated for the following 30 areas with laws or regulations requiring confidential name-based HIV infection reporting since 1998: Alabama, Arizona, Arkansas, Colorado, Florida, Idaho, Indiana, Iowa, Louisiana, Michigan, Minnesota, Mississippi, Missouri, Nebraska, Nevada, New Jersey, New Mexico, North Carolina, North Dakota, Ohio, Oklahoma, South Carolina, South Dakota, Tennessee, Utah, Virginia, West Virginia, Wisconsin, Wyoming, and the U.S. Virgin Islands.

*Includes persons whose area of residence is unknown.

Table 13. Estimated proportion of persons surviving for more than 12, 24, and 36 months after an AIDS diagnosis in 1998, by selected characteristics—United States

	No. of persons	Survival in months		
		>12	>24	>36
		Proportion		
Age at diagnosis (yrs)				
<13	228	0.91	0.88	0.87
13—14	54	0.96	0.94	0.81
15—24	1,553	0.95	0.93	0.89
25—34	12,160	0.93	0.89	0.87
35—44	16,868	0.90	0.86	0.83
45—54	7,543	0.86	0.81	0.77
55—64	2,039	0.79	0.74	0.70
≥65	663	0.72	0.65	0.59
Race/ethnicity				
White, not Hispanic	12,998	0.91	0.87	0.85
Black, not Hispanic	19,669	0.89	0.84	0.80
Hispanic	7,925	0.89	0.86	0.84
Asian/Pacific Islander	330	0.90	0.89	0.88
American Indian/Alaska Native	151	0.90	0.85	0.79
Exposure category				
Male adult or adolescent				
Male-to-male sexual contact	14,643	0.91	0.88	0.86
Injection drug use	6,645	0.87	0.82	0.78
Male-to-male sexual contact and injection drug use	2,122	0.92	0.88	0.84
Heterosexual contact	2,945	0.91	0.86	0.83
Other ^a	4,728	0.85	0.81	0.79
Subtotal	31,083	0.90	0.86	0.83
Female adult or adolescent				
Injection drug use	2,945	0.89	0.82	0.78
Heterosexual contact	4,563	0.92	0.87	0.83
Other ^a	2,287	0.88	0.85	0.82
Subtotal	9,795	0.90	0.85	0.81
Child(<13 yrs)				
Perinatal	221	0.91	0.88	0.87
Other ^b	7	0.86	0.86	0.86
Subtotal	228	0.91	0.88	0.87
Total^c	41,108	0.90	0.86	0.82

Note. Excludes persons whose date of death is before, or in the same month as, date of diagnosis. Excludes persons whose month of diagnosis or month of death is unknown.

^a Includes hemophilia, blood transfusion, perinatal, and risk not reported or not identified.

^b Includes hemophilia, blood transfusion, and risk not reported or not identified.

^c Includes 35 persons of unknown or multiple race and 2 persons of unknown sex.

Figure 2. Estimated proportion of persons surviving, by months after AIDS diagnosis during 1994–2001 and by year of diagnosis—United States

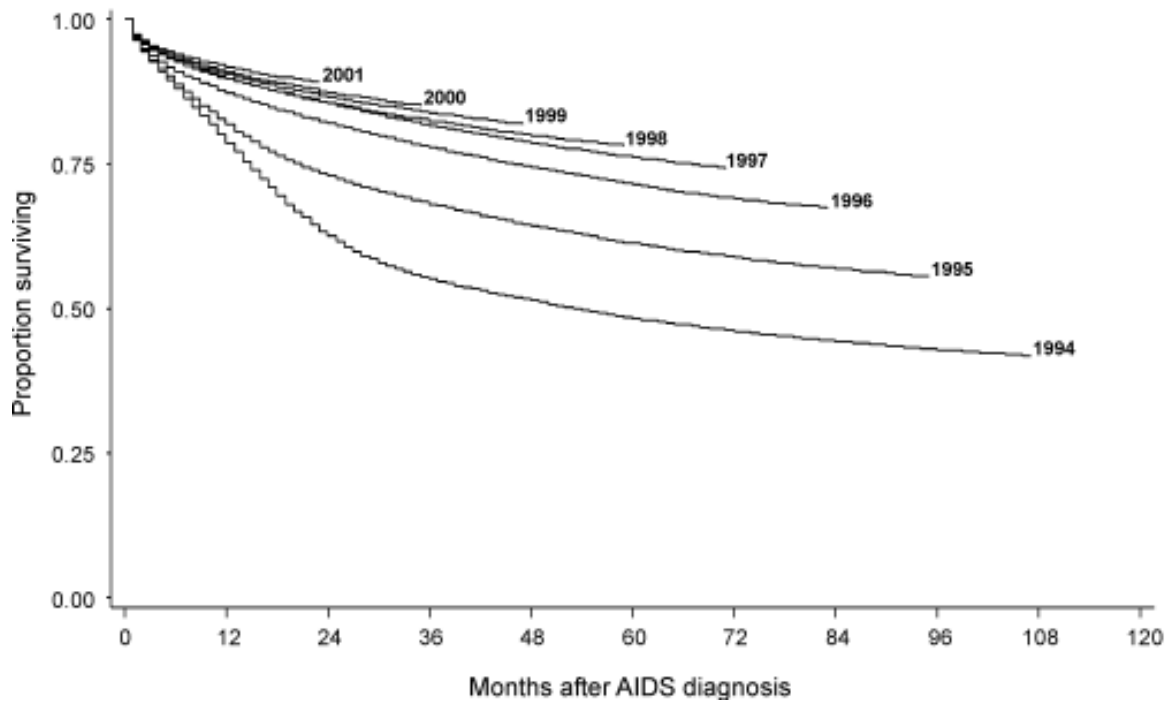


Figure 3. Estimated proportion of persons surviving, by months after AIDS diagnosis during 1994–2001 and by age group—United States

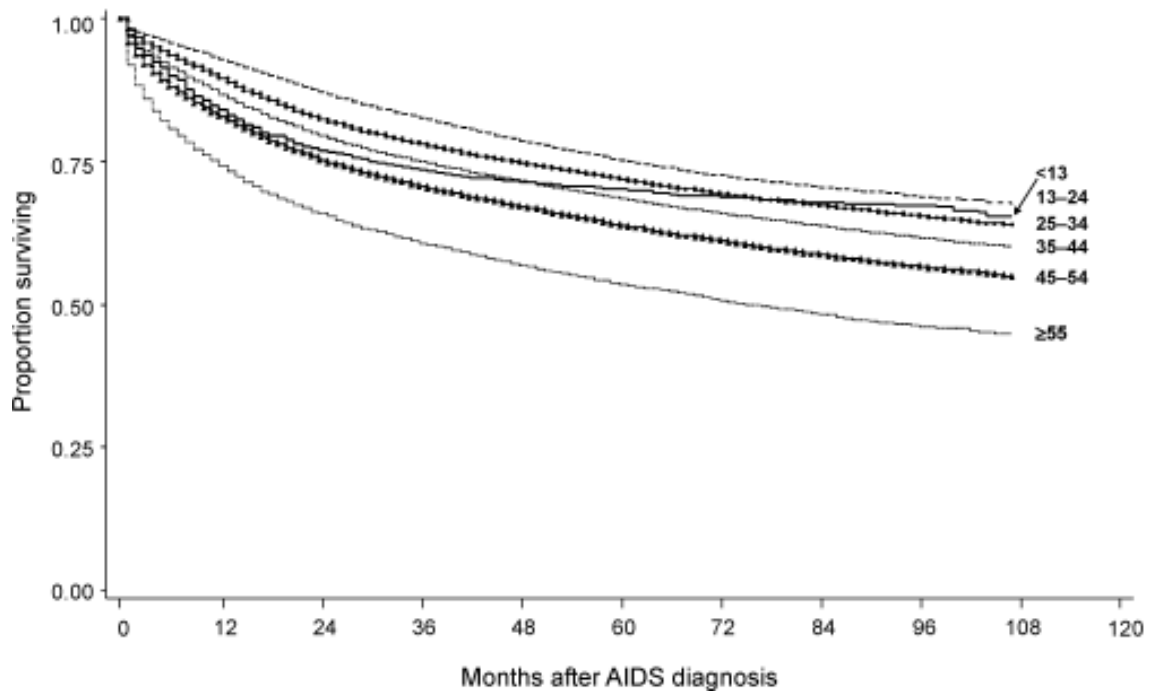


Figure 4. Estimated proportion of persons surviving, by months after AIDS diagnosis during 1994–2001 and by race/ethnicity—United States

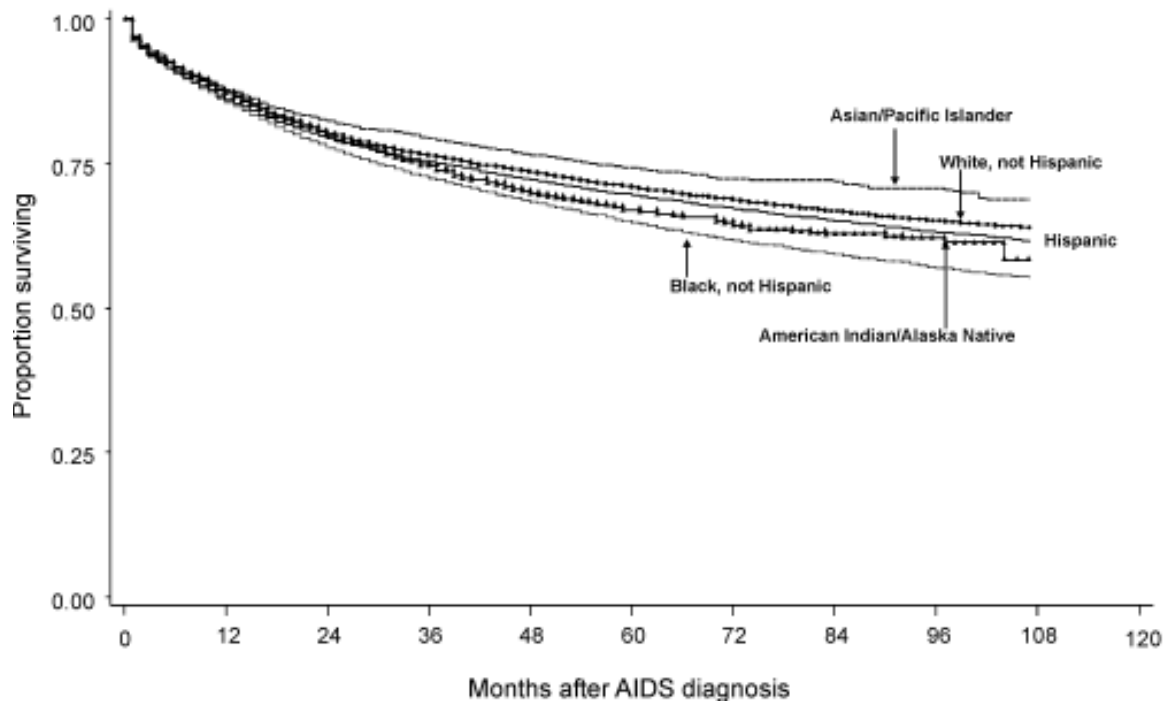


Table 14. AIDS cases and rates (per 100,000 population), by area of residence and age category, reported through December 2002—United States

Area of residence	2001		2002		Cumulative through 2002 ^a		
	No.	Rate	No.	Rate	Adults or	Children	Total
					adolescents	(<13 yrs)	
Alabama	437	9.8	432	9.6	7,059	76	7,135
Alaska	20	3.2	33	5.1	525	5	530
Arizona	529	10.0	630	11.5	8,529	41	8,570
Arkansas	197	7.3	240	8.9	3,355	38	3,393
California	4,275	12.4	4,364	12.4	127,434	630	128,064
Colorado	287	6.5	332	7.4	7,682	31	7,713
Connecticut	581	16.9	618	17.9	12,588	177	12,765
Delaware	248	31.1	193	23.9	2,995	24	3,019
District of Columbia	863	150.4	927	162.4	14,707	175	14,882
Florida	5,062	30.9	5,058	30.3	88,760	1,473	90,233
Georgia	1,738	20.7	1,471	17.2	25,795	213	26,008
Hawaii	131	10.7	128	10.3	2,704	16	2,720
Idaho	19	1.4	31	2.3	544	3	547
Illinois	1,326	10.6	2,108	16.7	28,149	277	28,426
Indiana	376	6.1	491	8.0	6,950	53	7,003
Iowa	90	3.1	94	3.2	1,487	11	1,498
Kansas	101	3.7	70	2.6	2,528	12	2,540
Kentucky	333	8.2	305	7.5	3,946	30	3,976
Louisiana	850	19.0	1,167	26.0	14,494	130	14,624
Maine	48	3.7	28	2.2	1,023	9	1,032
Maryland	1,844	34.2	1,854	34.0	25,045	313	25,358
Massachusetts	743	11.6	810	12.6	17,561	213	17,774
Michigan	547	5.5	789	7.9	12,535	110	12,645
Minnesota	153	3.1	161	3.2	4,049	27	4,076
Mississippi	416	14.5	433	15.1	5,236	57	5,293
Missouri	430	7.6	391	6.9	9,946	60	10,006
Montana	15	1.7	17	1.9	356	3	359
Nebraska	73	4.2	70	4.0	1,227	10	1,237
Nevada	252	12.0	314	14.4	4,944	28	4,972
New Hampshire	40	3.2	41	3.2	951	9	960
New Jersey	1,735	20.4	1,436	16.7	44,473	764	45,237
New Mexico	144	7.9	88	4.7	2,269	8	2,277
New York	7,433	38.9	6,664	34.8	153,457	2,298	155,755
North Carolina	916	11.2	1,061	12.8	12,264	120	12,384
North Dakota	3	0.5	3	0.5	111	1	112
Ohio	576	5.1	780	6.8	12,606	127	12,733
Oklahoma	243	7.0	204	5.8	4,202	27	4,229
Oregon	260	7.5	301	8.5	5,339	18	5,357
Pennsylvania	1,815	14.8	1,811	14.7	27,796	340	28,136
Rhode Island	102	9.6	107	10.0	2,236	25	2,261
South Carolina	714	17.6	833	20.3	10,967	88	11,055
South Dakota	25	3.3	11	1.4	199	4	203
Tennessee	581	10.1	792	13.7	9,872	52	9,924
Texas	2,857	13.4	3,140	14.4	59,380	392	59,772
Utah	121	5.3	94	4.1	2,168	21	2,189
Vermont	26	4.2	12	1.9	436	6	442
Virginia	939	13.0	955	13.1	14,780	179	14,959
Washington	525	8.8	477	7.9	10,439	34	10,473
West Virginia	98	5.4	83	4.6	1,252	10	1,262
Wisconsin	192	3.6	187	3.4	3,919	33	3,952
Wyoming	5	1.0	12	2.4	201	3	204
Subtotal	41,334	14.5	42,651	14.8	821,470	8,804	830,274

Table 14. AIDS cases and rates (per 100,000 population), by area of residence and age category, reported through December 2002—United States (continued)

Area of residence	2001		2002		Cumulative through 2002 ^a		
	No.	Rate	No.	Rate	Adults or adolescents	Children (<13 yrs)	Total
U.S. dependencies, possessions, and associated nations							
Guam	11	7.0	3	1.9	60	0	60
Pacific Islands, U.S.	0	0.0	4	1.8	8	0	8
Puerto Rico	1,241	32.3	1,139	29.5	26,847	395	27,242
Virgin Islands, U.S.	34	27.8	58	47.0	557	18	575
Total^b	42,736	14.8	43,950	15.0	849,780	9,220	859,000

^a Includes persons with a diagnosis of AIDS, reported from the beginning of the epidemic through 2002.

^b Includes persons whose state or area of residence is unknown. Cumulative total includes 841 persons whose state or area of residence is unknown.

Table 15. Cases of HIV infection (not AIDS), by persons' area of residence and age category, reported through December 2002, from areas with confidential name-based HIV infection reporting

Area of residence (Date HIV reporting initiated)	2002 No.	Cumulative through 2002 ^a		
		Adults or adolescents	Children (<13 yrs)	Total
Alabama (Jan. 1998)	522	5,820	42	5,862
Alaska (Feb. 1999)	41	88	2	90
Arizona (Jan. 1987)	499	5,176	49	5,225
Arkansas (July 1989)	197	2,208	19	2,227
Colorado (Nov. 1985)	437	6,102	32	6,134
Connecticut (July 1992) ^b	3	—	107	107
Florida (July 1997) ^c	6,122	27,638	275	27,913
Idaho (June 1986)	23	407	4	411
Indiana (July 1988)	477	3,930	44	3,974
Iowa (July 1998)	66	452	6	458
Kansas (July 1999)	88	1,072	16	1,088
Louisiana (Feb. 1993)	901	7,932	131	8,063
Michigan (Apr. 1992)	584	6,006	124	6,130
Minnesota (Oct. 1985)	250	3,110	35	3,145
Mississippi (Aug. 1988)	383	4,565	50	4,615
Missouri (Oct. 1987)	316	4,714	46	4,760
Nebraska (Sept. 1995)	53	591	7	598
Nevada (Feb. 1992)	323	3,367	25	3,392
New Jersey (Jan. 1992)	1,208	15,391	419	15,810
New Mexico (Jan. 1998)	72	749	3	752
New York (June 2000)	11,459	29,178	1,785	30,963
North Carolina (Feb. 1990)	1,118	11,432	128	11,560
North Dakota (Jan. 1988)	13	83	1	84
Ohio (June 1990)	876	6,961	85	7,046
Oklahoma (June 1988)	197	2,575	27	2,602
Pennsylvania (Oct. 2002) ^d	569	691	136	827
South Carolina (Feb. 1986)	597	7,428	103	7,531
South Dakota (Jan. 1988)	19	212	5	217
Tennessee (Jan. 1992)	797	6,610	80	6,690
Texas (Jan. 1999) ^e	5,027	14,764	350	15,114
Utah (Apr. 1989)	60	709	12	721
Virginia (July 1989)	999	9,198	79	9,277
West Virginia (Jan. 1989)	66	641	8	649
Wisconsin (Nov. 1985)	176	2,440	30	2,470
Wyoming (June 1989)	14	90	1	91
Subtotal	34,552	192,330	4,266	196,596
U.S. dependencies, possessions, and associated nations				
American Samoa (Aug. 2001)	0	1	0	1
Guam (Mar. 2000)	1	64	1	65
Northern Mariana Islands (Oct. 2001)	0	5	0	5
Virgin Islands, U.S. (Dec. 1998)	37	222	6	228
Persons reported from states with confidential name-based HIV infection reporting, who were residents of other states	368	2,017	48	2,065
Total^f	35,147	195,401	4,358	199,759

Note. Includes only persons with HIV infection that has not progressed to AIDS. Includes data from 36 states and from U.S. dependencies, possessions, and independent nations in free association with the United States.

^a Includes persons with a diagnosis of HIV infection, reported from the beginning of the epidemic through 2002.

^b Connecticut has confidential name-based HIV infection reporting only for pediatric cases.

^c Florida (since July 1997) has had confidential name-based HIV infection reporting only for new diagnoses.

^d Pennsylvania (October 2002) implemented confidential name-based HIV infection reporting only in areas outside the city of Philadelphia.

^e Texas (February 1994 through December 1998) reported only pediatric HIV infection cases.

^f Includes 786 persons reported from areas with confidential name-based HIV infection reporting, but whose area of residence is unknown. Includes 13 children reported from Oregon prior to the change in 2001 from name-based HIV infection reporting for pediatric cases to code-based reporting for all persons with HIV infection.

Table 16. AIDS cases, by persons' age category, exposure category, and sex, reported through December 2002—United States

Exposure category	Males				Females				Totals			
	2002		Cumulative through 2002 ^a		2002		Cumulative through 2002 ^a		2002		Cumulative through 2002 ^a	
	No.	%	No.	%	No.	%	No.	%	No.	%	No.	%
Adult or adolescent												
Male-to-male sexual contact	14,545	45	384,784	55	0	0	0	0	14,545	33	384,784	45
Injection drug use	5,121	16	151,367	22	2,381	21	58,552	39	7,502	17	209,920	25
Male-to-male sexual contact and injection drug use	1,510	5	54,224	8	0	0	0	0	1,510	3	54,224	6
Hemophilia/coagulation disorder	79	0	5,067	1	11	0	304	0	90	0	5,371	1
Heterosexual contact	3,213	10	36,692	5	4,740	42	63,379	42	7,953	18	100,071	12
<i>Sex with injection drug user</i>	519	2	10,412	1	985	9	22,939	15	1,504	3	33,351	4
<i>Sex with bisexual male</i>	0	0	0	0	205	2	4,088	3	205	0	4,088	0
<i>Sex with person with hemophilia</i>	3	0	72	0	15	0	446	0	18	0	518	0
<i>Sex with HIV-infected transfusion recipient</i>	27	0	472	0	32	0	660	0	59	0	1,132	0
<i>Sex with HIV-infected person, risk not specified</i>	2,664	8	25,736	4	3,503	31	35,246	23	6,167	14	60,982	7
Receipt of blood transfusion, blood components, or tissue ^b	147	0	5,164	1	118	1	3,988	3	265	1	9,152	1
Other/risk not reported or identified ^c	7,898	24	60,420	9	4,029	36	25,837	17	11,927	27	86,258	10
Subtotal	32,513	100	697,718	100	11,279	100	152,060	100	43,792	100	849,780	100
Child (<13 yrs)												
Hemophilia/coagulation disorder	0	0	229	5	0	0	7	0	0	0	236	3
Mother with, or at risk for, HIV infection	61	85	4,179	88	78	91	4,246	95	139	88	8,425	91
<i>Injection drug use</i>	5	7	1,637	35	7	8	1,622	36	12	8	3,259	35
<i>Sex with injection drug user</i>	4	6	771	16	5	6	735	16	9	6	1,506	16
<i>Sex with bisexual male</i>	3	4	95	2	5	6	100	2	8	5	195	2
<i>Sex with person with hemophilia</i>	1	1	19	0	0	0	15	0	1	1	34	0
<i>Sex with HIV-infected transfusion recipient</i>	0	0	11	0	0	0	14	0	0	0	25	0
<i>Sex with HIV-infected person, risk not specified</i>	21	29	679	14	26	30	718	16	47	30	1,397	15
<i>Receipt of blood transfusion, blood components, or tissue</i>	2	3	76	2	1	1	82	2	3	2	158	2
<i>Has HIV infection, risk not specified</i>	25	35	891	19	34	40	960	21	59	37	1,851	20
Receipt of blood transfusion, blood components, or tissue ^b	2	3	242	5	0	0	143	3	2	1	385	4
Other/risk not reported or identified ^d	9	13	80	2	8	9	94	2	17	11	174	2
Subtotal	72	100	4,730	100	86	100	4,490	100	158	100	9,220	100
Total	32,585		702,448		11,365		156,550		43,950		859,000	

^a Includes persons with a diagnosis of AIDS, reported from the beginning of the epidemic through 2002. Cumulative total includes 2 persons of unknown sex.

^b AIDS developed in 46 adults/adolescents and 3 children after they received blood that had tested negative for HIV antibodies. AIDS developed in 14 additional adults after they received tissue, organs, or artificial insemination from HIV-infected donors. Four of the 14 received tissue or organs from a donor who was negative for HIV antibody at the time of donation.

^c Includes 35 adults/adolescents who were exposed to HIV-infected blood, body fluids, or concentrated virus in health care, laboratory, or household settings, as supported by seroconversion, epidemiologic, and/or laboratory evidence. One person was infected after intentional inoculation with HIV-infected blood. For an additional 288 persons who acquired HIV infection perinatally, AIDS was diagnosed after age 13. These 288 persons are tabulated under the adult/adolescent, not the pediatric, exposure category.

^d Includes 5 children who were exposed to HIV-infected blood as supported by seroconversion, epidemiologic, and/or laboratory evidence: 1 child was infected after intentional inoculation with HIV-infected blood and 4 children were exposed to HIV-infected blood in a household setting. Of the 174 children, 22 had sexual contact with an adult with, or at high risk for, HIV infection.

Table 17. Cases of HIV infection (not AIDS), by persons' age category, exposure category, and sex, reported through December 2002, from areas with confidential name-based HIV infection reporting

Exposure category	Males				Females				Totals			
	2002		Cumulative through 2002 ^a		2002		Cumulative through 2002 ^a		2002		Cumulative through 2002 ^a	
	No.	%	No.	%	No.	%	No.	%	No.	%	No.	%
Adult or adolescent												
Male-to-male sexual contact	10,991	46	64,331	47	0	0	0	0	10,991	32	64,331	33
Injection drug use	2,149	9	17,312	13	1,253	11	10,123	18	3,402	10	27,436	14
Male-to-male sexual contact and injection drug use	738	3	7,693	6	0	0	0	0	738	2	7,693	4
Hemophilia/coagulation disorder	27	0	473	0	7	0	47	0	34	0	520	0
Heterosexual contact	1,825	8	10,689	8	3,925	35	24,136	42	5,750	17	34,825	18
<i>Sex with injection drug user</i>	268	1	1,964	1	591	5	5,289	9	859	2	7,253	4
<i>Sex with bisexual male</i>	0	0	0	0	172	2	1,536	3	172	0	1,536	1
<i>Sex with person with hemophilia</i>	4	0	21	0	16	0	164	0	20	0	185	0
<i>Sex with HIV-infected transfusion recipient</i>	17	0	98	0	38	0	167	0	55	0	265	0
<i>Sex with HIV-infected person, risk not specified</i>	1,536	6	8,606	6	3,108	28	16,980	30	4,644	13	25,586	13
Receipt of blood transfusion, blood components, or tissue	56	0	473	0	54	0	490	1	110	0	963	0
Other/risk not reported or identified	7,880	33	37,046	27	5,822	53	22,580	39	13,702	39	59,633	31
Subtotal	23,666	100	138,017	100	11,061	100	57,376	100	34,727	100	195,401	100
Child (<13 yrs)												
Hemophilia/coagulation disorder	3	1	105	5	0	0	1	0	3	1	106	2
Mother with, or at risk for, HIV infection	127	60	1,777	82	146	70	1,890	87	273	65	3,667	84
<i>Injection drug use</i>	10	5	502	23	14	7	498	23	24	6	1,000	23
<i>Sex with injection drug user</i>	11	5	188	9	12	6	185	8	23	5	373	9
<i>Sex with bisexual male</i>	3	1	25	1	1	0	17	1	4	1	42	1
<i>Sex with person with hemophilia</i>	0	0	2	0	0	0	7	0	0	0	9	0
<i>Sex with HIV-infected transfusion recipient</i>	0	0	6	0	0	0	5	0	0	0	11	0
<i>Sex with HIV-infected person, risk not specified</i>	35	17	371	17	45	21	458	21	80	19	829	19
<i>Receipt of blood transfusion, blood components, or tissue</i>	0	0	15	1	1	0	16	1	1	0	31	1
<i>Has HIV infection, risk not specified</i>	68	32	668	31	73	35	704	32	141	34	1,372	31
Receipt of blood transfusion, blood components, or tissue	1	0	22	1	1	0	25	1	2	0	47	1
Other/risk not reported or identified	79	38	272	13	63	30	266	12	142	34	538	12
Subtotal	210	100	2,176	100	210	100	2,182	100	420	100	4,358	100
Total	23,876		140,193		11,271		59,558		35,147		199,759	

Note. Includes only persons with HIV infection that has not progressed to AIDS. See Table 15 for areas with confidential name-based HIV infection reporting.

^a Includes persons with a diagnosis of HIV infection (not AIDS), reported from the beginning of the epidemic through December 2002. Cumulative total includes 8 persons of unknown sex.

Table 18. Reported cases of HIV/AIDS in infants born to HIV-infected mothers, by year of child's birth and selected characteristics, 1994–2002—25 states with confidential name-based HIV infection reporting

	Year of birth								
	1994	1995	1996	1997	1998	1999	2000	2001	2002
Child's race/ethnicity									
White, not Hispanic	43	29	25	15	8	13	13	8	5
Black, not Hispanic	148	135	93	95	74	52	42	40	16
Hispanic	20	13	9	11	5	8	10	7	4
Asian/Pacific Islander	1	1	1	2	0	0	0	0	0
American Indian/Alaska Native	1	1	2	0	0	0	0	1	0
Perinatal exposure category									
Mother with, or at risk for, HIV infection									
<i>Injection drug use</i>	59	50	41	38	20	11	10	4	1
<i>Sex with injection drug user</i>	45	22	14	10	8	10	6	5	2
<i>Sex with bisexual male</i>	5	3	1	5	2	3	3	1	2
<i>Sex with person with hemophilia</i>	1	0	0	0	0	1	1	0	0
<i>Sex with HIV-infected person, risk not specified</i>	61	58	43	41	28	29	26	19	6
<i>Receipt of blood transfusion, blood components, or tissue</i>	1	1	2	1	2	0	1	0	0
<i>Has HIV infection, risk not specified</i>	41	47	29	29	28	19	20	28	15
Child's diagnosis status^a									
HIV infection	99	103	94	92	63	56	52	46	23
AIDS	114	78	36	32	25	17	15	11	3
Total^b	213	181	130	124	88	73	67	57	26

Note. Since 1994, the following 25 states have had laws and regulations requiring confidential name-based HIV infection reporting: Alabama, Arizona, Arkansas, Colorado, Idaho, Indiana, Louisiana, Michigan, Minnesota, Mississippi, Missouri, Nevada, New Jersey, North Carolina, North Dakota, Ohio, Oklahoma, South Carolina, South Dakota, Tennessee, Utah, Virginia, West Virginia, Wisconsin, and Wyoming.

Data include children with a diagnosis of HIV infection. This includes children with a diagnosis of HIV infection only, a diagnosis of HIV infection and a later AIDS diagnosis, and concurrent diagnoses of HIV infection and AIDS.

^aStatus in the surveillance system as of June 2003.

^bIncludes children of unknown or multiple race.

Surveillance of HIV Infection (not AIDS)

This report includes case reports from 39 areas that had laws or regulations requiring confidential reporting by name for adults and adolescents and/or children with confirmed HIV infection (not AIDS), in addition to the reporting of persons with AIDS. Connecticut required reporting by name for children <13 years of age. After removal of personal identifying information, these reports were submitted to CDC (see Table 15 for list of areas). The implementation of HIV reporting has differed from state to state. Before 1991, surveillance of HIV infection (not AIDS) was not standardized, and the reporting of HIV infections (not AIDS) was based primarily on passive surveillance. The information on many of the cases reported before 1991 is not complete. Since then, CDC has assisted states in conducting active surveillance of HIV infections (not AIDS) by the use of standardized report forms and software.

Data on HIV infection (not AIDS) should be interpreted with caution. HIV surveillance reports may not be representative of all persons infected with HIV because not all infected persons have been tested. Many HIV-reporting states offer anonymous HIV testing, and home-collection HIV test kits are widely available in the United States. The results of anonymous tests are not reported to the confidential name-based HIV registries of state and local health departments. Therefore, reports of confidential test results may not represent all persons who tested positive for HIV infection. Furthermore, many factors, including the extent to which testing is routinely offered to specific groups, may influence testing patterns and the availability of, and access to, medical care and testing services. These data provide a minimum estimate of the number of persons known to be HIV infected in states with confidential HIV reporting.

As of December 31, 2002, 10 areas (California, Hawaii, Illinois, Kentucky, Maryland, Massachusetts, Rhode Island, Vermont, the District of Columbia, and Puerto Rico) had implemented a code-based system to conduct case surveillance for HIV infection (not AIDS). Other areas (Delaware, Maine, Montana, Oregon, and Washington) had implemented a name-to-code system for conducting HIV infection surveillance: initially, names are collected and, after any necessary public health follow-up, names are converted to codes. Connecticut allows cases of HIV infection (not AIDS) in

adults and adolescents to be reported by name or code; New Hampshire allows HIV cases to be reported with or without a name. Data on cases of HIV infection (not AIDS) from these areas are not included in the HIV data tables pending evaluations demonstrating acceptable performance under CDC guidelines and the development of methods for reporting such data to CDC.

For this report, cases in adults, adolescents, and children >18 months of age were classified by using the 2000 revised HIV surveillance case definition, which incorporates positive test results or reports of a detectable quantity of HIV nucleic acid or plasma HIV RNA [1]. For children <18 months of age, the pediatric HIV reporting criteria reflect diagnostic advances that permit the diagnosis of HIV infection during the first months of life. By the use of HIV nucleic acid detection tests, HIV infection can be detected in nearly all infants aged 1 month and older. The timing of the HIV serologic and HIV nucleic acid detection tests specified in the definitive and presumptive criteria for HIV infection is based on the recommended practices for diagnosing infection in children aged <18 months and on evaluations of the performance of these tests for children in this age group. Children aged <18 months born to an HIV-infected mother are categorized as having had perinatal exposure to HIV infection if the child does not meet the criteria for HIV infection or the criteria for “not infected with HIV” [1, 2]. Children born before 1994 were considered HIV infected if they met the HIV case definition stated in the 1987 pediatric classification system for HIV infection [3].

Because states initiated reporting on different dates, the length of time reporting has been in place influences the number of HIV infection cases reported. For example, data presented for a given annual period may include cases reported during only a part of the year. Before statewide HIV reporting, some states collected reports of HIV infection (not AIDS) in selected populations. Therefore, these states have reports that precede the initiation of statewide confidential reporting. A state with confidential HIV infection reporting also may report persons who tested positive in that state but who were residents of other states. Therefore, when HIV data are presented by state of residence, cases reported before the date a state initiated reporting may have been reported from other states with confidential HIV infection reporting.

Over time, HIV infection may progress to AIDS and be reported to surveillance. Persons with HIV infection (not AIDS) who are later reported as having AIDS are deleted from the HIV infection (not AIDS) tables and added to the AIDS tables. Persons with HIV infection may be tested at any point on the clinical spectrum of disease; therefore, the time between diagnosis of HIV infection and diagnosis of AIDS differs. In addition, because surveillance practices differ, the reporting and updating of persons' clinical and vital status differs among states. Completeness of reporting for HIV infection (not AIDS) is estimated at more than 85% [4]. By matching data in the national surveillance database, CDC estimates that approximately 2% of cases of HIV infection (not AIDS) are duplicates.

Surveillance of AIDS

All 50 states, the District of Columbia, U.S. dependencies, possessions, and associated nations report AIDS cases to CDC by using a uniform surveillance case definition and case report form. The original definition was modified in 1985 and 1987 [5, 6]. The case definition for adults and adolescents was modified again in 1993 [7; see also 8]. The revisions incorporated a broader range of AIDS-indicator diseases and conditions and used HIV diagnostic tests to improve the sensitivity and specificity of the definition. The laboratory and diagnostic criteria for the 1987 pediatric case definition [3] were updated in 1994 [9]. Effective January 1, 2000, the surveillance case definition for HIV infection was revised to reflect advances in laboratory HIV virologic tests. The definition incorporates the reporting criteria for HIV infection and AIDS into a single case definition for adults and children [1].

For persons with laboratory-confirmed HIV infection, the 1987 revision incorporated encephalopathy, wasting syndrome, and other indicator diseases that are diagnosed presumptively (i.e., without confirmatory laboratory evidence of opportunistic infection). In addition to the 23 clinical conditions in the 1987 definition, the 1993 case definition for adults and adolescents includes HIV infection among persons with CD4+ T-lymphocyte counts of less than 200 cells/ μ L or a CD4+ percentage of less than 14 and a diagnosis of pulmonary tuberculosis, recurrent pneumonia, or invasive cervical cancer. For adults, adolescents, and children \leq 18 months of age, the 2000 revised HIV surveillance case definition incorporates positive test results or reports of a detectable quantity of HIV nucleic acid or plasma HIV RNA.

The pediatric case definition incorporates the revised 1994 pediatric classification system for evidence of HIV infection. Cases among children with their first positive results by Western blot or HIV detection tests before October 1994 were categorized according to the 1987 classification system. For children of any age with an AIDS-defining condition that requires evidence of HIV infection, a single positive HIV virologic test result (i.e., HIV nucleic acid [DNA or RNA], HIV viral culture, HIV p24 antigen) is sufficient for a reportable AIDS diagnosis if the diagnosis is documented by a physician.

Although completeness of reporting of AIDS cases to state and local health departments differs by geographic region and patient population, studies conducted by state and local health departments indicate that the reporting of AIDS cases in most areas of the United States is more than 85% complete [10–13]. In addition, multiple routes of exposure, opportunistic infections diagnosed after the initial AIDS case report was submitted to CDC, and vital status may not be determined or reported for all cases. However, among person reported as having AIDS, the reporting of deaths is estimated to be more than 90% complete [14]. By matching data in the national surveillance database, CDC estimates that approximately 3% of AIDS cases are duplicates.

Since January 1, 1994, CDC has not accepted AIDS case reports that meet only the laboratory-based immunologic criteria of the 1993 expanded surveillance case definition [7] if information on sex or race/ethnicity was missing. A small number of cases previously reported to CDC without those variables have been returned to the health departments for follow-up and have been deleted from the totals. Included in this report are persons known to be infected with HIV type 2 (HIV-2) [see also 15].

Tabulation and Presentation of Data

Data in this report are provisional. This report includes information received by CDC through June 30, 2003. For analyses of diagnoses of HIV infection, we used data from 30 areas (i.e., 29 states and the U.S. Virgin Islands) that have had HIV infection reporting for a sufficient time (i.e., at least since 1998) to allow for stabilization of data collection and for adjustment of the data in order to monitor trends.

This report is organized in five sections. In sections 1 through 3 (i.e., Tables 1 through 12, Figure 1, and Maps 1 and 2), data have been statistically adjusted to

correct for delays in the reporting of cases and deaths; unreported risk or exposure has been statistically redistributed to better present the trends in the epidemic and the distribution of risk characteristics among affected populations. To assess trends in diagnoses, deaths, or prevalence, it is preferable to use adjusted data, presented by year of diagnosis instead of year of report. In section 5 (Tables 14 through 18), HIV and AIDS data are tabulated by date of report to CDC. Data for the U.S. dependencies, possessions, and associated nations are included in the totals. The U.S. dependencies, possessions, and associated independent nations comprise Puerto Rico, the U.S. Virgin Islands, Guam, American Samoa, the Republic of Palau, the Republic of the Marshall Islands, the Commonwealth of the Northern Mariana Islands, and the Federated States of Micronesia. The last 5 areas constitute the category Pacific Islands, U.S., as listed in this report.

Selection of areas with mature HIV reporting systems for analysis of diagnoses of HIV/AIDS and HIV infection (not AIDS)

The inclusion of areas with mature confidential name-based HIV reporting for tabulation and presentation of HIV/AIDS and HIV infection (not AIDS) data was based on the date of the implementation of HIV reporting in the area and the ability to calculate 4 years of reporting delays in order to display trends reliably. For this report, 30 areas with laws or regulations requiring confidential name-based HIV infection reporting since 1998 were eligible for inclusion. The 30 areas are Alabama, Arizona, Arkansas, Colorado, Florida, Idaho, Indiana, Iowa, Louisiana, Michigan, Minnesota, Mississippi, Missouri, Nebraska, New Jersey, New Mexico, Nevada, North Carolina, North Dakota, Ohio, Oklahoma, South Carolina, South Dakota, Tennessee, Utah, Virginia, West Virginia, Wisconsin, Wyoming, and the U.S. Virgin Islands.

Selection of areas for analyses of reports of HIV infection (not AIDS)

Areas included in tabulations for reports of HIV infection (not AIDS) are based on the date of implementation of name-based HIV infection reporting before the end of 2002. For this report, data from 39 areas were used in Tables 15 and 17 to describe reports of cases of HIV infection (not AIDS).

Age groups

Age groups of persons living with HIV/AIDS, HIV infection (not AIDS), or with AIDS are based on the person's age as of December 31, 2002. All other age groups are based on the person's age at the first documented positive HIV-antibody test result for persons with a diagnosis of HIV infection (not AIDS), and age at diagnosis of AIDS for persons with a diagnosis of AIDS. The age category for adults and adolescents includes persons ≤ 13 years; the age category for children includes children < 13 years of age.

Race and ethnicity

In the *Federal Register* for October 30, 1997 [16], the Office of Management and Budget announced the Standards for Maintaining, Collecting, and Presenting Federal Data on Race and Ethnicity, also known as Statistical Policy Directive 15. These standards, which superseded the 1977 standards, reflected a change in federal policy regarding the collection of race and ethnicity data; implementation by January 1, 2003 was mandated. At a minimum, the following race categories should be collected: American Indian or Alaska Native; Asian; black or African American; Native Hawaiian or Other Pacific Islander; and white. Additionally, systems must be able to retain information when multiple racial categories are reported. Two ethnicity categories should be collected regardless of race: Hispanic and not Hispanic.

Because data for this report were compiled from reports to CDC through June 2003, race and ethnicity information may have been collected under two systems. The race and ethnicity categories in the system used through December 2002 are maintained in this report because most were under that system. Persons who reported multiple racial categories or whose race was unknown are included in the total numbers in Tables 1-5, 7-11, and 18. Also, persons reported as non-Hispanic may include persons whose ethnicity was unreported.

Tabulation of persons living with HIV/AIDS, AIDS, and HIV infection (not AIDS)

Tabulation of persons living with HIV/AIDS, HIV infection (not AIDS), or with AIDS (Tables 8 through 12 and Maps 1 and 2) include persons whose vital status was reported as "alive" as of the last update to the data; persons whose vital status is missing or unknown

are not included. Tabulations of deaths of persons with AIDS (Table 7) include persons whose vital status was reported as “dead” as of the last update; persons whose vital status is missing or unknown are not included. Caution should be used in interpreting these data because states differ in how often they review the vital status of persons reported with HIV/AIDS, HIV infection (not AIDS), or with AIDS. In addition, some cases may be lost to follow-up.

Geographic designations

Regions of residence included in the report are defined as follows. Northeast: Connecticut, Maine, Massachusetts, New Hampshire, New Jersey, New York, Pennsylvania, Rhode Island, and Vermont; Midwest: Illinois, Indiana, Iowa, Kansas, Michigan, Minnesota, Missouri, Nebraska, North Dakota, Ohio, South Dakota, and Wisconsin; South: Alabama, Arkansas, Delaware, District of Columbia, Florida, Georgia, Kentucky, Louisiana, Maryland, Mississippi, North Carolina, Oklahoma, South Carolina, Tennessee, Texas, Virginia, and West Virginia; West: Alaska, Arizona, California, Colorado, Hawaii, Idaho, Montana, Nevada, New Mexico, Oregon, Utah, Washington, and Wyoming; Guam, Puerto Rico, the U.S. Pacific Islands, and the U.S. Virgin Islands.

Survival analyses

For the survival analyses presented in Table 13 and Figures 2 through 4, we used survival or failure time analysis methods for AIDS case data reported through June 30, 2003. Table 13 was limited to AIDS cases diagnosed in 1998, and Figures 2 through 4 were limited to cases diagnosed during 1994–2001. Table 13 and the figures were limited to deaths through December 2002; this was done to allow at least 6 months for a death to be reported by June 30, 2003 and at least 1 month after AIDS diagnosis. Statistical significance of differences in survival among demographic groups was assessed in pairwise comparisons by the log rank test at $p < 0.005$.

Exposure Categories

For surveillance purposes, cases of HIV/AIDS, HIV infection (not AIDS), and AIDS are counted only once in a hierarchy of exposure categories. Persons with more than one reported mode of exposure to HIV are classified in the exposure category listed first in the hierarchy. The exception is men who report sexual contact

with other men and injection drug use; this group makes up a separate exposure category.

Persons whose exposure category is classified as male-to-male sexual contact include men who report sexual contact with other men (i.e., homosexual contact) and men who report sexual contact with both men and women (i.e., bisexual contact). Persons whose exposure category is classified as heterosexual contact are persons who report specific heterosexual contact with a person with, or at increased risk for, HIV infection (e.g., an injection drug user).

Adults and adolescents born in, or who had sex with someone born in, a country where heterosexual transmission was believed to be the predominant mode of HIV transmission (formerly classified as Pattern II countries by the World Health Organization) are no longer classified as having heterosexually acquired AIDS unless they meet the criteria stated in the preceding paragraph. Similar to other cases among persons who were reported without behavioral or transfusion risks for HIV infection, these cases are now classified (in the absence of other risk information that would classify them in another exposure category) as “no risk reported or identified” [17]. Cases in children whose mother was born in, or whose mother had sex with someone born in, Pattern II countries are now classified (in the absence of other risk information that would classify them in another exposure category) as “Mother with, or at risk for, HIV infection: has HIV infection, risk not specified.”

Cases in persons with no reported exposure to HIV through any of the routes listed in the hierarchy of exposure categories are classified as “no risk reported or identified.” No identified risk (NIR) cases include cases that are being followed up by local health department officials; cases in persons whose exposure history is incomplete because they died, declined to be interviewed, or were lost to follow-up; and cases in persons who were interviewed or for whom other follow-up information was available and no mode of exposure was identified.

As of September 2000, the procedures for investigating cases reported without risk changed from ascertaining risk for all reported cases to estimating risk distributions from statistical models and population-based samples. States continue to investigate any report of an unusual exposure to HIV and report these cases to CDC. CDC will continue to tabulate the number of documented unusual exposures to HIV reported by the states.

Because recently reported HIV or AIDS cases are more likely to be reported as NIR, recent AIDS inci-

dence in some exposure categories will be underestimated unless an adjustment is made. For tables and figures showing the estimated diagnoses of HIV infection (not AIDS) and AIDS, the adjustment of NIR cases among adults and adolescents is based on the redistributions of exposure category, by specific sex, race, and region, of cases that were diagnosed during 1992–1999 and initially assigned to the NIR category but that were later reclassified. Similar adjustment of NIR cases among children are based on exposure-category redistribution of all cases diagnosed during that period and later reclassified [18, 19].

Trends in AIDS Incidence

Because of the temporary distortion caused by the 1993 expansion of the case definition, trends in AIDS incidence had previously been estimated by statistically adjusting cases reported according to the criteria added to the case definition in 1993. This adjustment estimated when an AIDS-related opportunistic infection (AIDS-OI) would develop in persons reported on the basis of immunologic criteria (CD4+ T-lymphocytes counts of less than 200 cells/ μ L or percentage of less than 14) and thus approximated trends in AIDS-OI incidence as if the case definition had not changed [20]. However, by the end of 1996, the temporary distortion caused by reporting prevalent as well as incident cases that met the criteria added in 1993 had almost entirely waned. In addition, after the end of 1996, the incidence of AIDS-OIs could no longer be reliably estimated because data are not available to model the increasing effects of therapy on rate of disease progression. Therefore, from 1996 forward, trends in AIDS incidence are adjusted for reporting delay, but not for the 1993 expansion of the case definition. These trends represent the incidence of AIDS (1993 criteria) in the population and increasingly represent persons with newly diagnosed HIV infection at the time of AIDS diagnosis, those with HIV infection who did not seek or receive treatment, and those for whom treatment has failed. Thus, despite the effects of treatment on AIDS incidence, AIDS incidence remains an important measure of the effect of the epidemic and of the need for resources for the severely ill.

Reporting Delays

Reporting delays (time between diagnosis of HIV infection or AIDS and report to CDC) may differ among exposure, geographic, racial/ethnic, age, sex, and vital

status categories; for some AIDS cases, delays have been as long as several years. About 52% of AIDS cases were reported to CDC within 3 months of diagnosis and about 88% were reported within 1 year. Approximately 88% of deaths of persons with AIDS are reported within 1 year. For cases of HIV infection (not AIDS) diagnosed since the implementation of uniform reporting through the HIV/AIDS Reporting System on January 1, 1994, about 66% of all cases were reported to CDC within 3 months of diagnosis, and about 93% were reported within 1 year.

Adjustments of the estimated data on HIV infection (not AIDS) and on AIDS to account for reporting delays are calculated by a maximum likelihood statistical procedure, taking into account differences in reporting delays among exposure, geographic, racial/ethnic, age, sex, and vital status categories, and assuming that reporting delays in these groups have not changed over time [21, 22]

Rates

Rates per 100,000 population were calculated for the numbers of diagnoses of AIDS in 2002, as well as for persons living with HIV infection (not AIDS) at the end of 2002. Population denominators used to compute these rates for the 50 states and the District of Columbia were based on official postcensus estimates for 2002 from the U.S. Census Bureau [23] and bridged-race estimates for 2000 obtained from the National Center for Health Statistics [24]. The bridged estimates are based on the Census 2000 counts and produced under a collaborative agreement with the U.S. Census Bureau. These estimates result from bridging the 31 race categories used in Census 2000, as specified in the 1997 Office of Management and Budget standards [16] for the classification of data on race and ethnicity, to the four race categories specified in the 1977 standards. Population denominators for U.S. dependencies, possessions, and associated nations were based on official postcensus estimates and Census 2000 counts from the U.S. Census Bureau's International Database. Each rate is calculated by dividing the number of cases diagnosed during the 12 months in 2002 (or the number of persons living with HIV infection or with AIDS at the end of 2002) by the 2002 population, multiplied by 100,000. The denominators used for computing age-, sex-, and race-specific rates are computed by applying the age, sex, and race proportions from the bridged-race population estimates for 2000 to the 2002 postcensus esti-

mates of the total population for each state. When bridged-race population denominators for the U.S. dependencies, possessions, and associated nations were not available, proportions from the U.S. Census Bureau's International Database for 2000 were used to estimate the age-, and sex-specific subpopulations [25].

References

1. CDC. Guidelines for national human immunodeficiency virus case surveillance, including monitoring for human immunodeficiency virus infection and acquired immunodeficiency syndrome. *MMWR* 1999;48(No. RR-13):29-31.
2. CDC. Guidelines for the use of antiretroviral agents in pediatric HIV infection. *MMWR* 1998;47(No. RR-4):1-43.
3. CDC. Current trends: classification system for human immunodeficiency virus (HIV) infection in children under 13 years of age. *MMWR* 1987;36:225-230, 235.
4. CDC. Diagnosis and reporting of HIV and AIDS in states with integrated HIV and AIDS surveillance—United States, January 1994–June 1997. *MMWR* 1998; 47:309-314.
5. CDC. Current trends: revision of the case definition of acquired immunodeficiency syndrome for national reporting—United States. *MMWR* 1985; 34:373-375.
6. CDC. Revision of the CDC surveillance case definition for acquired immunodeficiency syndrome. *MMWR* 1987;36(No. SS-1):1S-15S.
7. CDC. 1993 Revised classification system for HIV infection and expanded surveillance case definition for AIDS among adolescents and adults. *MMWR* 1992;41(No. RR-17):1-19.
8. CDC. Current trends update: acquired immunodeficiency syndrome—United States, 1994. *MMWR* 1995; 44:64-67.
9. CDC. 1994 Revised classification system for human immunodeficiency virus infection in children less than 13 years of age; official authorized addenda: human immunodeficiency virus infection codes and official guidelines for coding and reporting ICD-9-CM. *MMWR* 1994;43(No. RR-12):1-19.
10. Buehler JW, Berkelman RL, Stehr-Green JK. The completeness of AIDS surveillance. *J Acquire Immune Defic Syndr* 1992;5:257-264.
11. Rosenblum L, Buehler JW, Morgan MW, Costa S, Hidalgo J, Holmes R, Lieb L, Shields A, Whyte BM. The completeness of AIDS case reporting, 1988: a multisite collaborative surveillance project. *Am J Public Health* 1992;82:1495-1499.
12. Schwarcz SK, Hsu LC, Parisi MK, Katz MH. The impact of the 1993 AIDS case definition on the completeness and timeliness of AIDS surveillance. *AIDS* 1999;13:1109-1114.
13. Klevens RM, Fleming PL, Li J, Gaines CG, Gallagher K, Schwarcz S, Karon J, Ward JW. The completeness, validity, and timeliness of AIDS surveillance data. *Ann Epidemiol* 2001;11:443-449.
14. Karon JM, Rosenberg PS, McQuillan G, Khare M, Gwinn M, Petersen LR. Prevalence of HIV infection in the United States, 1984 to 1992. *JAMA* 1996;276:126-131.
15. CDC. Update: HIV-2 infection among blood and plasma donors—United States, June 1992–June 1995. *MMWR* 1995;44:603-606.
16. National Archives and Records Administration. Revisions to the Standards for the Classification of Federal Data on Race and Ethnicity. *Federal Register* 1997;62:58781-58790. Available at: <http://www.whitehouse.gov/omb/fedreg/ombdir15.html>.
17. CDC. Current trends: heterosexually acquired AIDS—United States, 1993. *MMWR* 1994; 43:155-160.
18. Green TA, Karon JM, Nwanyanwu OC. Changes in AIDS incidence trends in the United States. *J Acquir Immune Defic Syndr* 1992;5:547-55.

19. Neal JJ, Fleming, PL, Green TA, Ward JW. Trends in heterosexually acquired AIDS in the United States, 1988 through 1995. *J Acquire Immune Defic Syndr* 1997;14: 465-474.
20. Karon JM, Green TA, Hanson DL, Ward JW. Estimating the number of AIDS-defining opportunistic illness diagnoses from data collected under the 1993 AIDS surveillance definition. *J Acquire Immune Defic Syndr* 1997;16:116-121.
21. Green TA. Using surveillance data to monitor trends in the AIDS epidemic. *Stat Med* 1998;17:143-54.
22. Karon JM, Devine OJ, Morgan WM. Predicting AIDS incidence by extrapolating from recent trends. In: Castillo-Chavez C, ed. *Mathematical and Statistical Approaches to AIDS Epidemiology*. Berlin: Springer-Verlag; 1989:83:58-88. Lecture Notes in Biomathematics.
23. U.S. Census Bureau. Population estimates: entire data set. Available at: http://eire.census.gov/popest/estimates_dataset.php. Accessed September 23, 2003.
24. National Center for Health Statistics. Datasets available at: ftp://ftp.cdc.gov/pub/Health_Statistics/NCHS/datasets/nvss/bridgepop/br040100.txt. Accessed September 23, 2003.
25. U.S. Census Bureau. Census 2000: the island areas. Available at: <http://www.census.gov/population/www/cen2000/islandareas.html>. Accessed September 23, 2003.

Web addresses for state or local HIV and AIDS Surveillance Reports

State or Area	URL for state or local HIV and AIDS surveillance report
Alabama	http://www.adph.org/aids
Alaska	http://www.akepi.org/hivstd/hiv.stm
Arizona	http://www.hs.state.az.us/phs/hiv/hiv_epi.htm
Arkansas	www.healtharkansas.com/data/data.html
California	http://www.dhs.ca.gov/AIDS/
Chicago	www.cityofchicago.org/health
Colorado	http://www.cdph.state.co.us/dc/HIVSTDPROGS.ASP
Connecticut	http://www.dph.state.ct.us/BCH/infectiousdise/2003/final%20pages/aids_surv_home_Z.htm
Delaware	http://www.delaware-epi.org/numbers.htm
District Of Columbia	http://dchealth.dc.gov/information/reports/index.shtm
Florida	http://www9.myflorida.com/disease_ctrl/AIDS/index.html
Georgia	http://www.ph.dhr.state.ga.us/epi/aidsunit.shtml
Hawaii	http://www.state.hi.us/doh/resource/comm_dis/std_aids/aids_rep/index.html
Houston	http://www.ci.houston.tx.us/department/health/STD/Epi%20Profile%20HIV.pdf
Idaho	http://www2.state.id.us/dhw/std-aids/facts_and_figures.htm
Illinois	http://www.idph.state.il.us/health/statshome.htm
Indiana	http://www.in.gov/isdh/programs/hivstd/quarterly/quarterly.htm
Iowa	http://www.idph.state.ia.us/ch/hiv_aids_programs.asp#surveillance
Kansas	http://www.kdhe.state.ks.us/hiv-std/surveillance.html
Kentucky	http://chs.ky.gov/publichealth/hiv-aids-Statistical_Reports.htm
Los Angeles	http://www.lapublichealth.org/phcommon/public/reports/rptspubdisplay.cfm?unit=hiv&ou=ph&prog=hae
Louisiana	http://www.oph.dhh.state.la.us/HIVAIDS/surveillance/index.html
Maine	www.state.me.us/dhs/boh/ddc/HIV_STD.htm
Maryland	http://dhmh.state.md.us/AIDS/epictr.htm
Massachusetts	http://www.state.ma.us/dph/cdc/aids/aidsprog.htm
Michigan	http://www.michigan.gov/mdch/1,1607,7-132-2944_5320_5331—,00.html
Minnesota	http://www.health.state.mn.us/divs/dpc/aids-std/stat/hivsurvrpts.htm
Mississippi	http://www.msdh.state.ms.us/msdhsite/index.cfm/14,1185,150,html#Mississippi
Missouri	http://www.dhss.state.mo.us/HIV_STD/HIVstatsheet.html
Montana	www.dphhs.state.mt.us/hpsd/pubheal/disease/commdis/stats.htm
Nebraska	http://www.hhs.state.ne.us/dpc/HIV.htm
Nevada	http://health2k.state.nv.us/hiv/survey/special.htm
New Hampshire	http://www.dhhs.state.nh.us/DHHS/BCDCS/default.htm
New Jersey	www.state.nj.us/health/aids/aidsqtr.htm
New Mexico	www.aidsinonet.org/epi/epihome.html
New York	http://www.health.state.ny.us/nysdoh/research/aids/homeaids.htm
New York City	http://www.nyc.gov/html/doh/html/pub/pub.html#hiv_epi
North Carolina	http://www.epi.state.nc.us/epi/hiv/surveillance.html
North Dakota	http://www.ndhiv.com/
Ohio	http://www.odh.state.oh.us/Data/Inf_Dis/hivcov.htm
Oklahoma	www.health.state.ok.us/program/hivstd/epi/stats.htm
Oregon	http://www.dhs.state.or.us/publichealth/hiv/index.cfm
Pennsylvania	www.health.state.pa.us/hiv-epi/
Philadelphia	www.phila.gov/health/units/aaco/aidsphila.html
Rhode Island	http://www.health.ri.gov/topics/aids.htm
Samoa	http://www.asg-gov.com/departments/doh.asg.htm
San Francisco	www.dph.sf.ca.us/php/aidsurvunit.htm
South Carolina	http://www.scdhec.net/HS/diseasecont/stdwk/html/surveillance.htm
South Dakota	http://www.state.sd.us/doh/Disease/stats.htm
Tennessee	http://www.coetenn.com/IndexTNHIVdata.htm
Texas	www.tdh.state.tx.us/hivstd/stats/default.htm
Utah	www.health.utah.gov/els/hivaids/survsero.html
Vermont	http://www.healthvermonters.info/hs/epi/cdepi/AIDS/aidshome.shtml
Virginia	http://www.vdh.state.va.us/std/datahome2.asp
Washington	www.doh.wa.gov/cfh/hiv_aids/prev_edu/statistics.htm
West Virginia	http://www.wvdhhr.org/bph/oehp/sdc/aids.htm
Wisconsin	http://www.dhfs.state.wi.us/aids-hiv/Resources/Overviews/SURV_EPI.htm
Wyoming	http://wdhfs.state.wy.us/hiv

Note. Web sites were not available for the following areas: American Samoa, Federation of Micronesia, uam, Northern Mariana Islands, Puerto Rico, Virgin Islands, U.S.